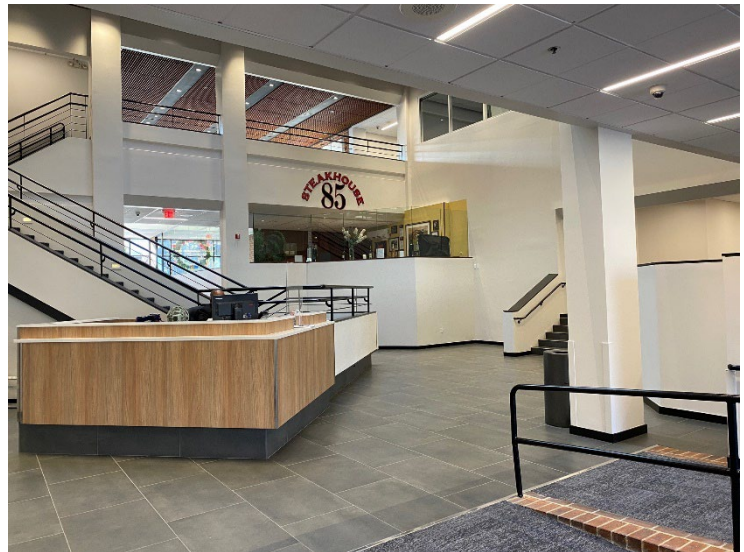
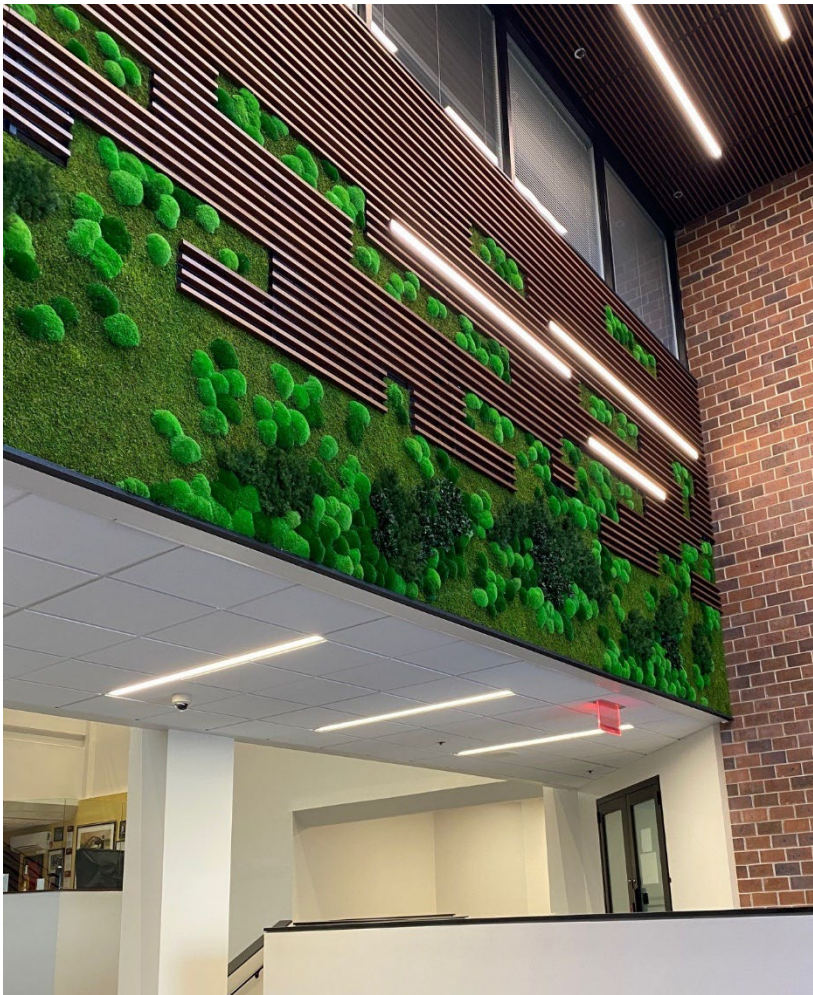
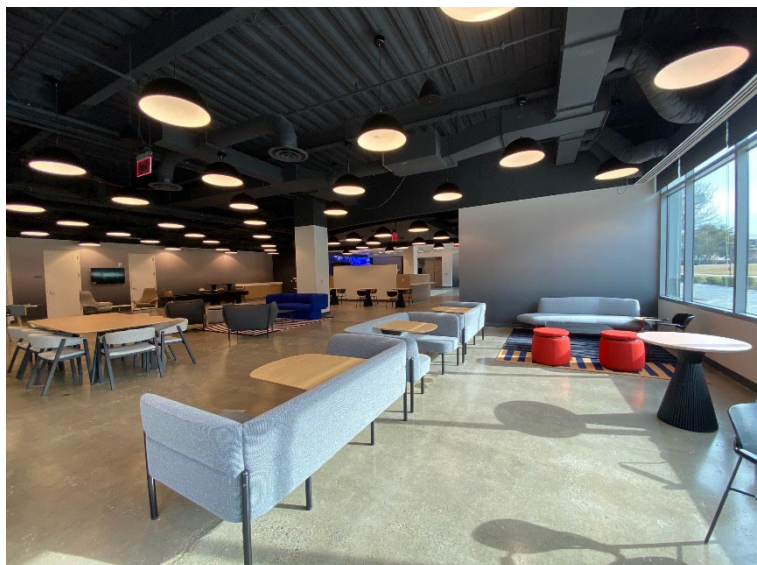


PROJECTS
Capital Improvements

KIMMERLE NEWMAN Architects
Kilmer Square Lobby Ten

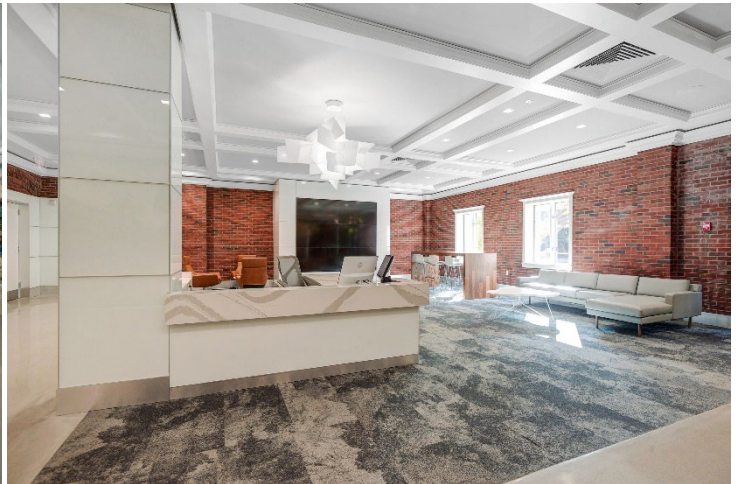
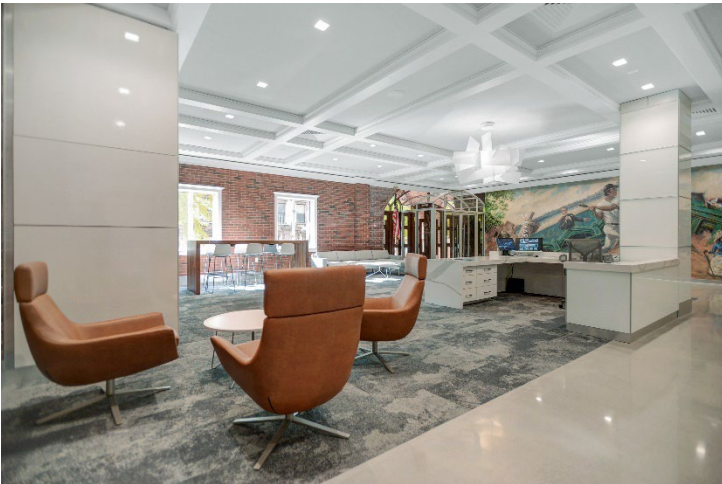
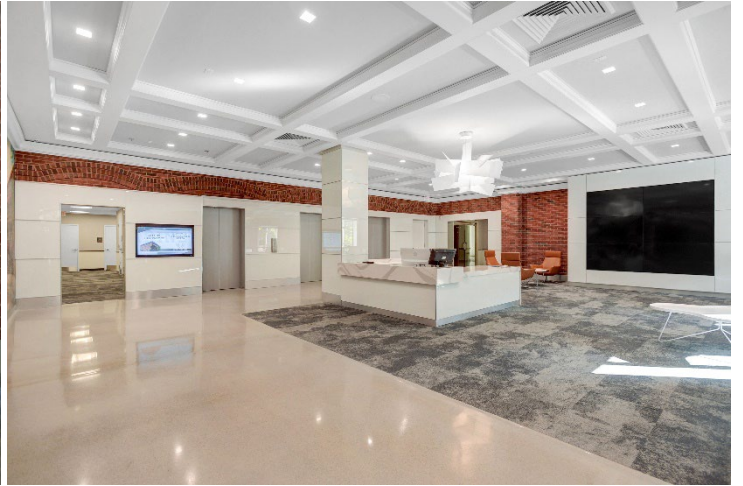
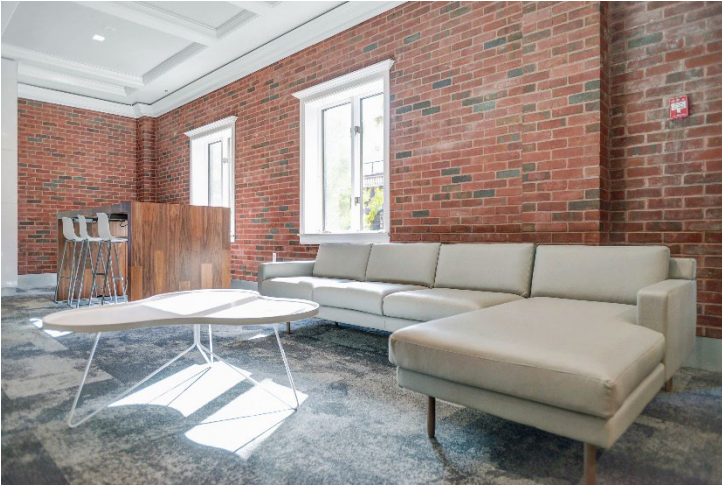
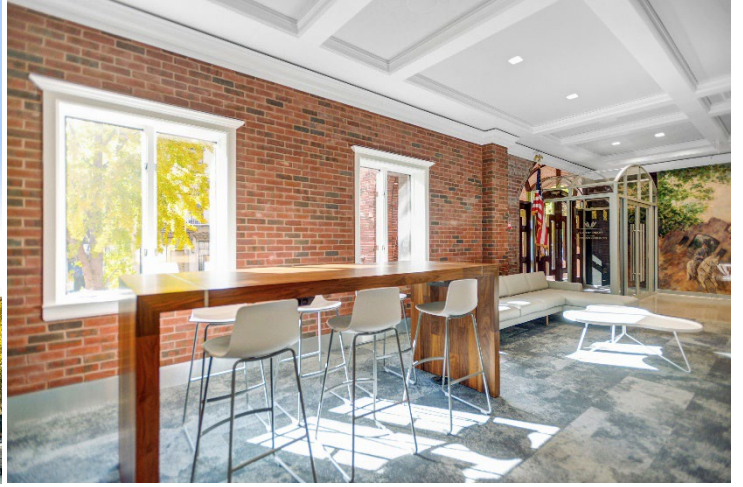


KIMMERLE NEWMAN Architects
194 Wood Ave. Lobby



KIMMERLE NEWMAN Architects

Five Marine View Plaza Hoboken, NJ

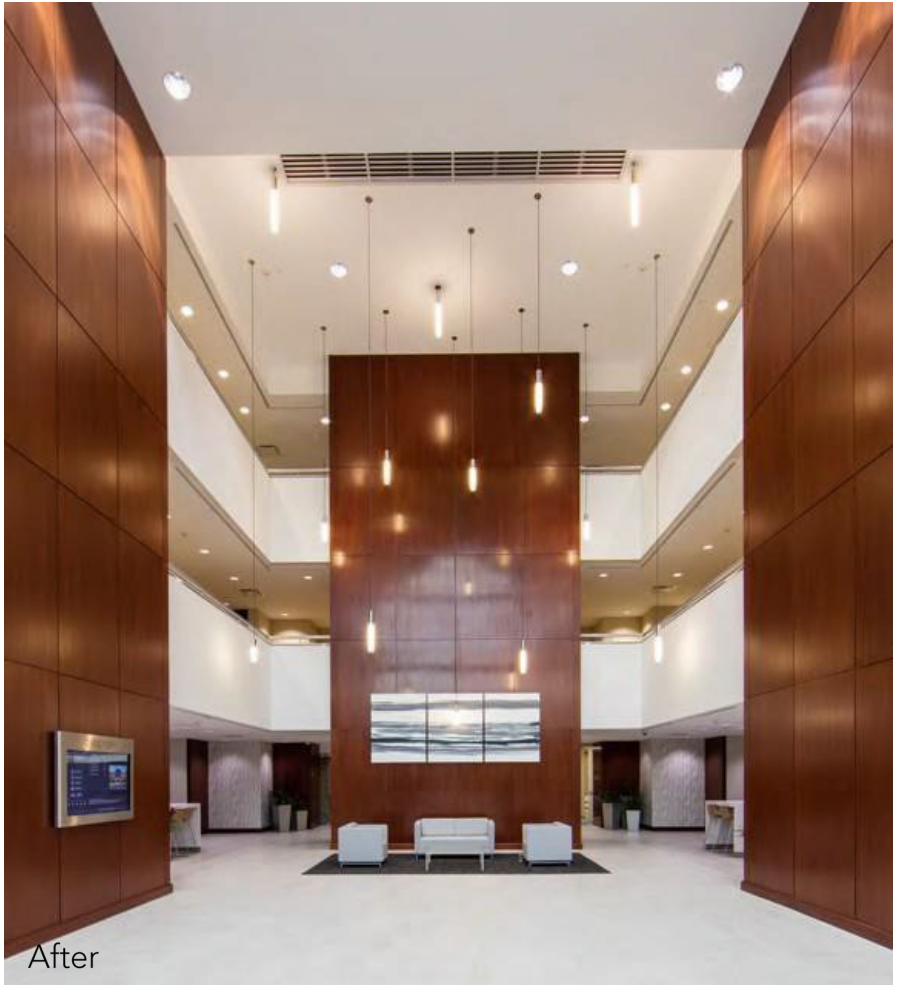


550 Hills Lobby
Bedminster, NJ

Corporate Interiors



Before



After



550 Hills Lobby
Bedminster, NJ

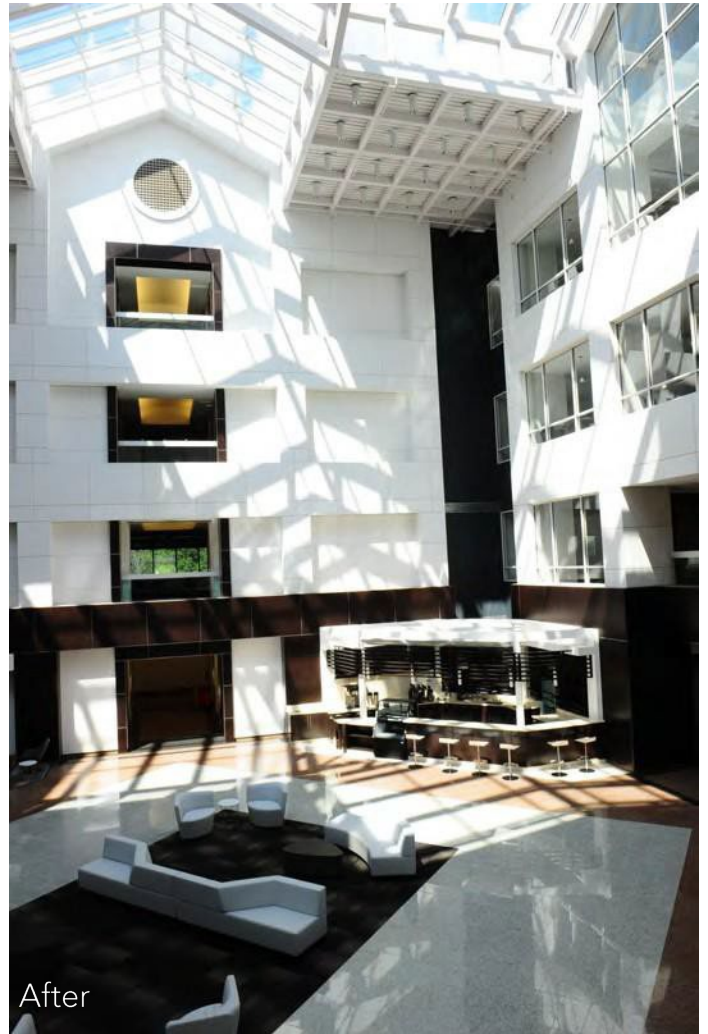
Corporate Interiors



100 Campus Atrium Renovation

Florham Park, NJ

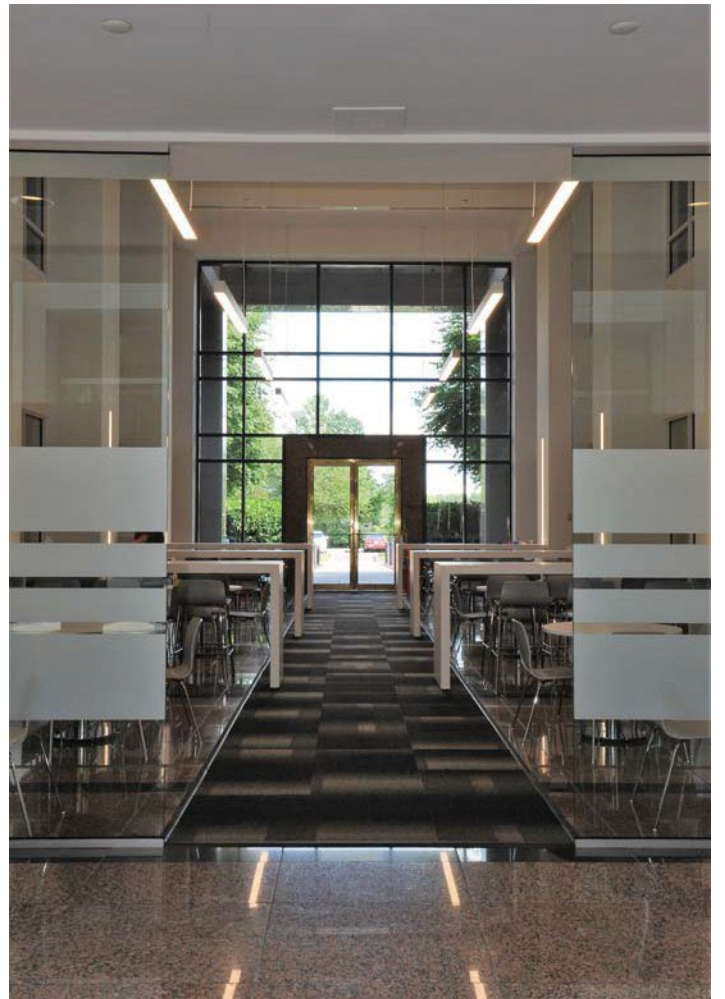
Capital Improvement



100 Campus Atrium Renovation
Florham Park, NJ

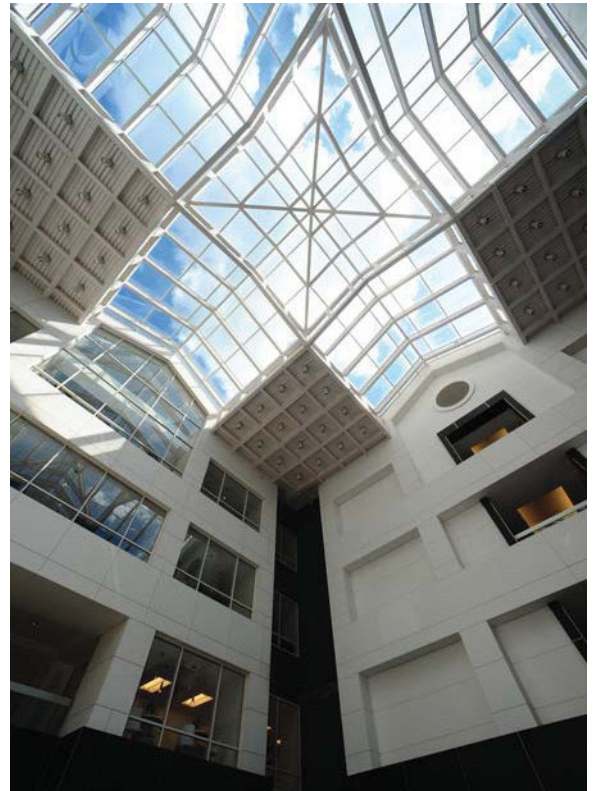
Capital Improvement

Before



100 Campus Atrium Renovation
Florham Park, NJ

Capital Improvement



Raritan Plaza 1

Edison, NJ

Capital Improvement



Raritan Plaza 1
Edison, NJ

Capital Improvement



Raritan Plaza 1
Edison, NJ

Capital Improvement



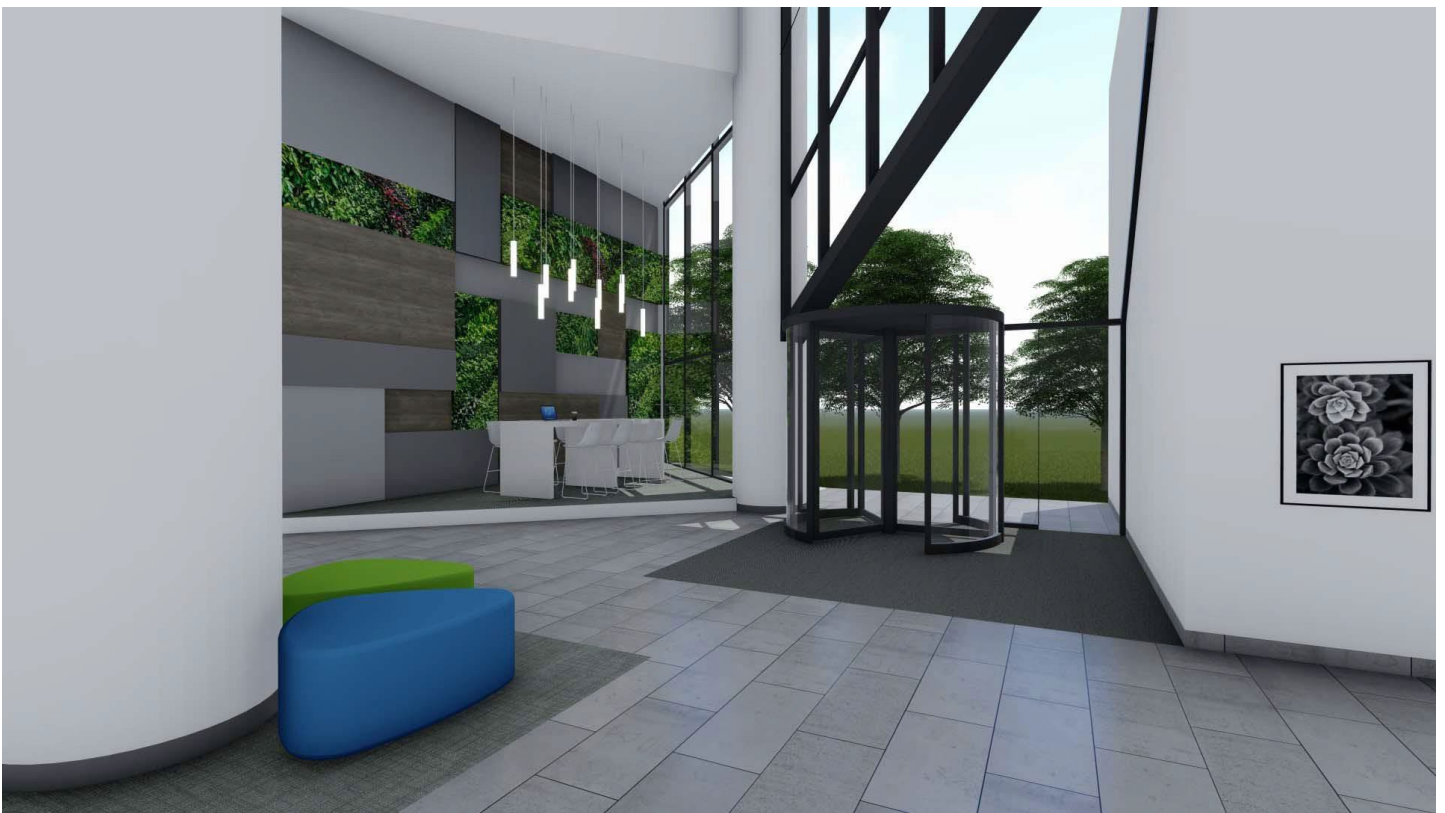
Raritan Plaza 1
Edison, NJ

Capital Improvement



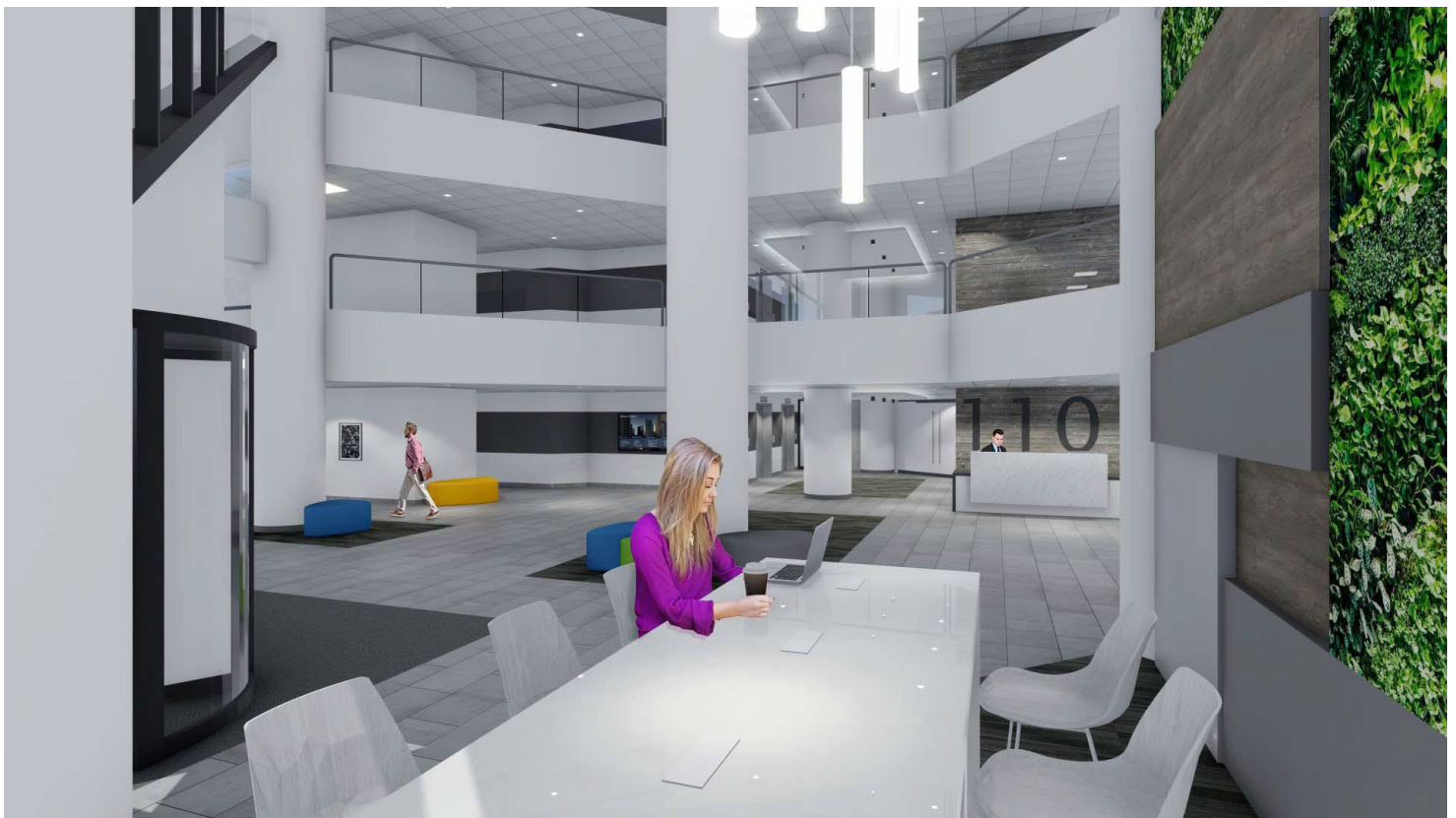
Raritan Plaza 1
Edison, NJ

Capital Improvement



Raritan Plaza 1
Edison, NJ

Capital Improvement



Ivy Realty 30 Lanidex Plaza Office Fit Out
Parsippany, NJ

Corporate Interiors



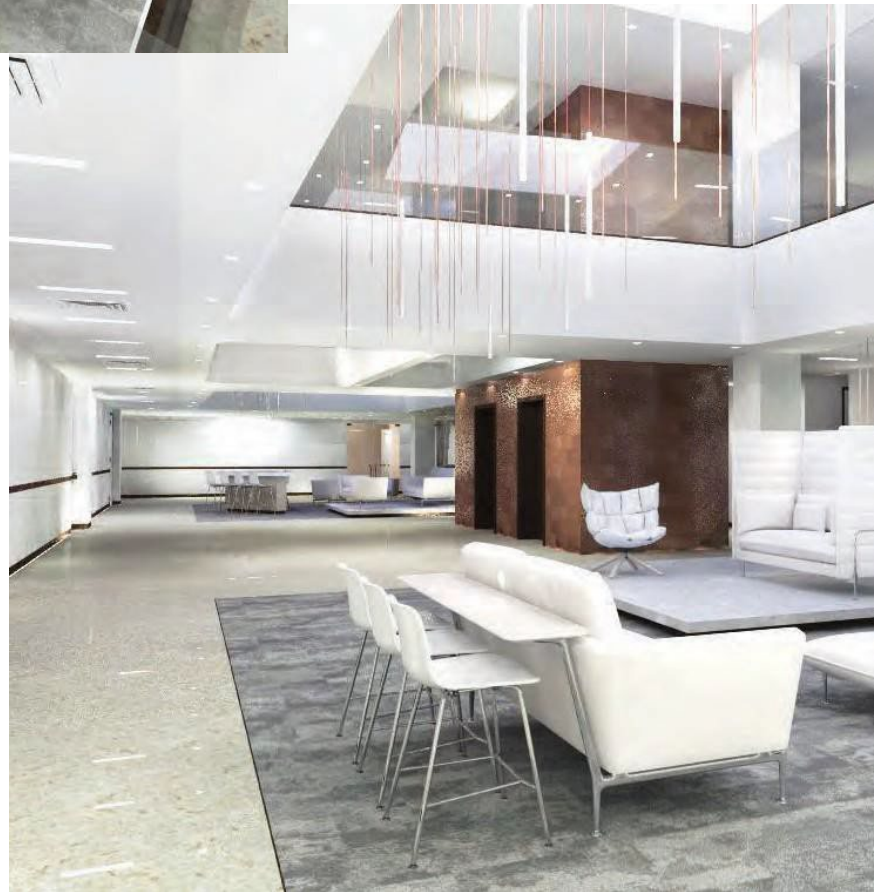
KIMMERLE NEWMAN Architects

685 Route 202
Bridgewater, NJ



KIMMERLE NEWMAN Architects

865 Route 202
Bridgewater, NJ



KIMMERLE NEWMAN Architects

2 Tower Center -Atrium

Brunswick, NJ

Corporate Interiors



Gateway 2 Lobby

Morristown, NJ

Corporate Interiors



Before



Lobby

Gateway 2 Lobby
Morristown, NJ

Corporate Interiors



Before



CoffeeBar



CoffeeBar

KIMMERLE NEWMAN Architects

10 Park Place Lobby

Morristown, NJ

Historical Preservation



KIMMERLE GROUP

1109 Mt. Kemble Ave | Harding Twp, NJ 07960
127 W 20th Street, #100 | New York, NY 10011

Morris Corporate Center 1 & 2
Parsippany, NJ





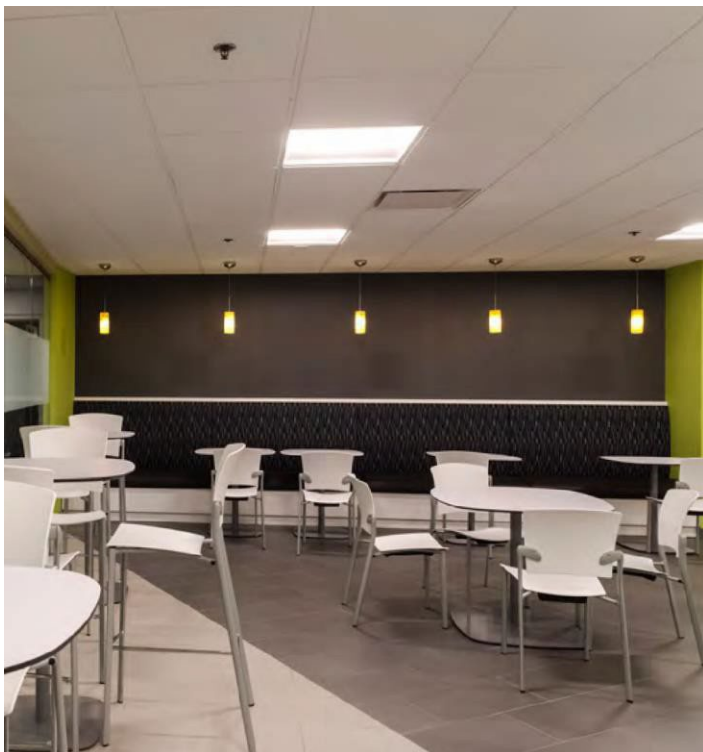


Morris Corporate Center

Café 2

Parsippany, NJ

Corporate Interiors





KIMMERLE NEWMAN Architects

Bridgewater Hills Corporate Center
Bridgewater, NJ

Corporate Interiors



KIMMERLE GROUP

1109 Mt. Kemble Ave | Harding Twp, NJ 07960
127 W 20th Street, #100 | New York, NY 10011

47-11 Austell Place - In Progress

Long Island city, NY

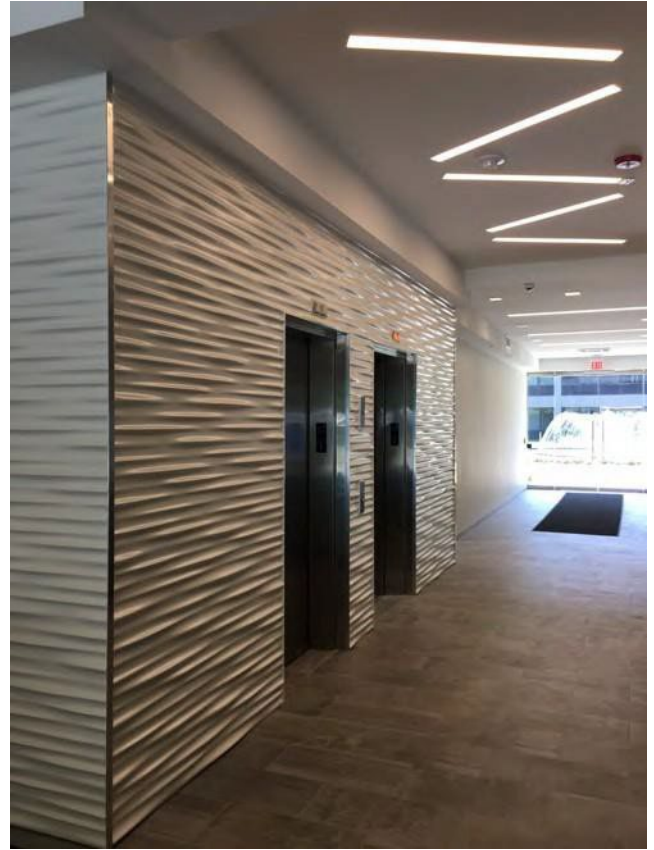
Corporate Interiors



KIMMERLE NEWMAN Architects

800 & 900 Lanidex
Parsippany, NJ





IMS
Parsippany, NJ

Corporate Interiors



Reception



Lobby



Open Office



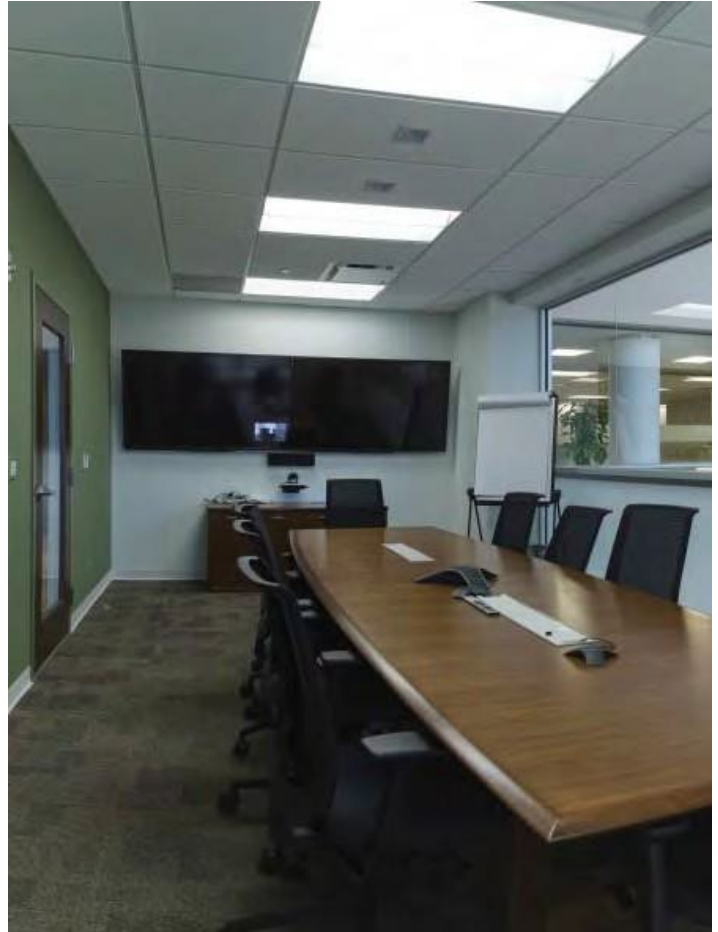
Lobby

IMS
Parsippany, NJ

Corporate Interiors



Reception



Conference



Open Office

IMS
Parsippany, NJ

Corporate Interiors



Cafe



Cafe

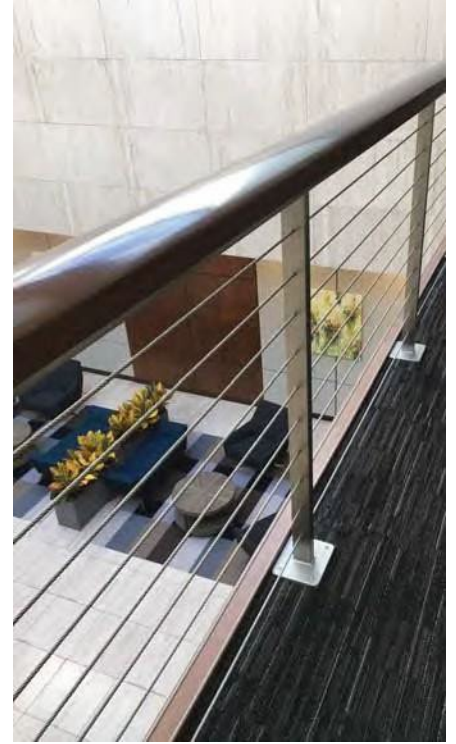


Cafe

KIMMERLE NEWMAN Architects

5 Paragon - Lobby
Montvale, NJ

Capital Improvement



KIMMERLE NEWMAN Architects

5 Paragon - Cafe
Montvale, NJ

Capital Improvement

