

Project Experience

Non-Profit Engagements

KIMMERLE GROUP

KIMMERLE NEWMAN Architects

KIMMERLE Workspace

KIMMERLE Project Management

KIMMERLE Branding Studio

About Kimmerle

Kimmerle Group is a multifaceted architectural design, real estate planning and development firm consisting of six affiliated divisions with complementary specialties.

Our headquarters is based in Harding Township, NJ, with offices in New York City and Stonington, CT.

Our affiliated subsidiaries represent a broad range of design and real estate service offerings:

KIMMERLE NEWMAN Architects

Thirty-year long architectural & interior design practice

KIMMERLE Urban Studio

Research based real estate, planning & urban design services

KG Real Estate Services

Real estate development & management company

KIMMERLE Workspace

Twenty-eight-year long product & equipment purchasing agent

KIMMERLE Project Management

Services to corporate, medical & public entities

KIMMERLE Branding

Branding & image creation for public & private entities

30 Years of proven track record

30+ Staff & support team members

Ongoing Projects nationally

FL CA NY AZ NJ IL

Int'l Projects

Canada, India, Egypt, Costa Rica

Project Team

Leadership



George J. Kimmerle
President and Sr. Partner



Paul Newman
Vice President & Sr. Partner

Architecture & Design



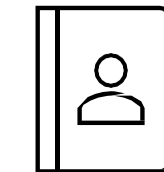
William Kimmerle
Principal | Partner



Cindy Cui
Partner



Richard Jecmen,
AIA
Project Director



Architects,
Designers &
Support Staff

Furniture & Equip.



Marleni Galindo
Project Manger

PM Services



Raquel Da Silva
Project Manager

KIMMERLE NEWMAN Architects

Kimmerle Group's Architectural and Interior Design Division:

Do you have an unusual assignment, a challenging project, or a unique vision for something unusual? At KNA we thrive on these types of engagements. As architects and real estate development professionals, we are able to work well outside the parameters of typical architecture firms, bringing together real estate development, planning, design, and so much more

With decades of experience in the planning and execution of a broad range of private, corporate, medical, and institutional facilities, our work has won numerous awards. The commercial and residential projects we have designed and executed are enjoyed by millions of people across the United States and around the world

- Multi-family housing
- Hotels
- Office buildings
- Multi-use corporate campuses
- Schools – Higher Education
- Hospitals and medicalcenters

Giving Back to Non-Profits

New Jersey's non-profit organizations do important work in their communities, and KNA is proud to support them. Since its inception, KNA has provided architectural and planning services, largely on a pro bono basis, to a long list of New Jersey-based charitable organizations, non-profit agencies, and institutions. It has been immensely gratifying to help them reach their community outreach objectives and serve their constituents, through the design and completion of:

- Food pantries
- Visitor's centers
- Teen centers
- Parks, recreation improvements
- New buildings
- Signage and graphics
- Honor walls

Medical Facility Specialists

KNA has an established architecture and design practice in the area of medical facilities. Our work includes architecture, interior design, master planning, and development advisory services. Our different practice specialties include:

- Surgery centers
- Radiology/imaging/MRI centers
- Cardiology units and offices
- Dialysis centers
- Oncology/infusion centers

In addition to dozens of medical offices and health care centers, the firm has designed over a dozen regional hospitals/health care systems in the New York/New Jersey tri-state area.

Strategic Partner in Real Estate Development

For decades, development companies based in New York and New Jersey have relied on KNA as their building architect for on-call services. We have built close working relationships with some of New Jersey's leading industrial and warehouse owners, and have an extensive network of corporate, brokerage, and development partners. This professional network, coupled with our architecture expertise, make us a particularly effective strategic partner for market-focused opportunities including:

- Retrofits of existing multi-tenant buildings
- The design of new buildings and additions
- Development of plans for prospective tenants
- Creating strategies for leasing potentials in the market

Historic Preservation and Restoration

At Kimmerle Newman Architects, historic preservation of residential and commercial structures is in our DNA. In fact, we are one of only a handful of firms statewide designated as preservation architects by the New Jersey Department of Building and Construction.

Our special affinity for preservation, sustainability, and expertise is evident in the redevelopment and conversion of historic sites as well as rehab and renovation projects. We take our focus on functional sustainability to heart and are proud that Kimmerle Group is moving soon to a LEED-certified [building](#).

Project Listing

The Kimmerle Group is pleased to provide this overview of our non-profit client projects and related work for your review.

In addition to our architectural practice, Kimmerle Workspace is an associated furniture dealer and can assist in equipment and furnishing purchases.

We have worked on various projects for numerous non-profit clients over the last decade and have experience in

- **Childcare Facilities**
- **Fitness Centers**
- **Teen Centers**
- **Housing/Lodging**

We invite you to view our web site at www.kimmerle.com



Offices located in: Stonington, CT & New York, NY
1109 Mount Kemble Avenue, Morristown, NJ 07960

Spectrum for Living- Teaneck, Westwood, Closter, New Jersey

Training and multi-use facilities for disabled Children

The Gateway Family YMCA Step up- Elizabeth, Nj

Interfaith Food Pantry , Morristown, New Jersey

Children's House- Verona, New Jersey

Morristown Neighborhood House, Morristown, New Jersey

West Chester Institute for Human Development, Valhalla, New York

Preschool Advantage , Morristown, New Jersey

New Jersey Leap, Newark, New jersey

National Child Protection Facility, Sacred Heart Church Jersey City
New Jersey

Loyola House of Retreats Morristown, New Jersey
A component of the Archdiocese of Paterson/RCC.

Willing Heart Baptist Metropolitan Church, Newark, New Jersey

Visiting Nurse of Somerset County, Morristown, New Jersey

Montclair State University Newman Center Dormitories, Montclair,
New Jersey

Arc of Rockland, Nyack New York

Our Savior Church, NYC
Church of our savior, 2nd and 3rd floor rectory renovations
Church of our savior, fire alarm upgrade
Church of our savior, bishops' residence
Church of our savior, air rights planning review

Salvation Army Women's Shelter
Morristown, NJ
Funding through Internal Sources

Deidre O'Brien Child Advocacy Center
Morristown, NJ
Winner AIA National Award of Merit
County, private funding sources

Sussex County Child Advocacy Center
Newton, NJ
County, state, private funding sources

Interfaith Food Pantry
Morristown, NJ
New warehouse and office, arranged donated furniture
Private funding sources

Easter Union County YMCA Step Up Housing
Elizabeth, NJ
Multiple funding source

Great Swamp Educational Center, Harding,
New Jersey

Childcare/Daycare Centers: includes renovated and new facilities and buildings

2001 **Red Caboose Daycare**
Philipsburg, New Jersey

2001.Morristown Teen Center
Morristown, New Jersey

2002-04 **YMCA of Eastern Union County**
Rahway Childcare Playground
and Activity Center, Toilet Facility

Affordable Housing:

1993. Episcopal Community Development Corp.
St. James Housing Corporation
44 Unit Affordable Housing Project
Newark, NJ
State, church, and private funding sources

1993. Episcopal Community Development Corp.
St. James Housing Corporation
Multiple Infill Site Affordable Housing prototypes
for Newark, Asbury Park, and Trenton, NJ
State, church, and private funding sources

2003-04 **Spectrum for Living**
Disabled Adult Living Center Expansion
Closter, NJ
Medicaid, private funding sources

Social infill housing/integrated parking lots, Newark and Hoboken,
New Jersey

Start - - - - - Occupancy

Architecture Timeline:



Programming & Visioning

- Group Interviews & Counts
- Detailed Counts, Needs Assessment & Summaries
- Identify Values for Office & Culture
- Identify Look & Feel of Space



Schematic Design

- Test Fits & Space Plans
- Concept Approach Development
- Code Issue Review
- Work Letters for Specific Candidate Sites, Lease Review
- Budget Analysis Schedules
- Candidate Site - Due Diligence



Design Development

- Technical Requirements
- Technical Design
- Interior Design (Materials, Colors)
- Lighting



Construction Documents

- Technical Drawings
- Technical Specifications
- Bid, Permit & Building Uses
- Documentation of Other Scopes



Construction Phase

- Bidding & Reviews
- Construction Administration



Completion

- Punch List Follow-up
- Closeout
- Post- Completion Review

Optional Services

Furniture / FFE

- Detailed Furniture Requirements
- Standards Development
- Detailed Pricing Leveling

3.12.17

**Big Time Products, LLC
Staff & Support Summary Program**

Staff Summary

	Office Exec 15x25 375	Offices 15x20 300	Office 10x15 150	Workstation 88 64	Reception in room sf	Total
	1	5	19	79	1	104
Total Staff Count	1	5	19	79		104
Subtotal Staff SF	150	1500	2850	5056		9556
circulation factor: 1.45						
Total Usable SF projected	218	2175	4133	7331		13856

Support Areas

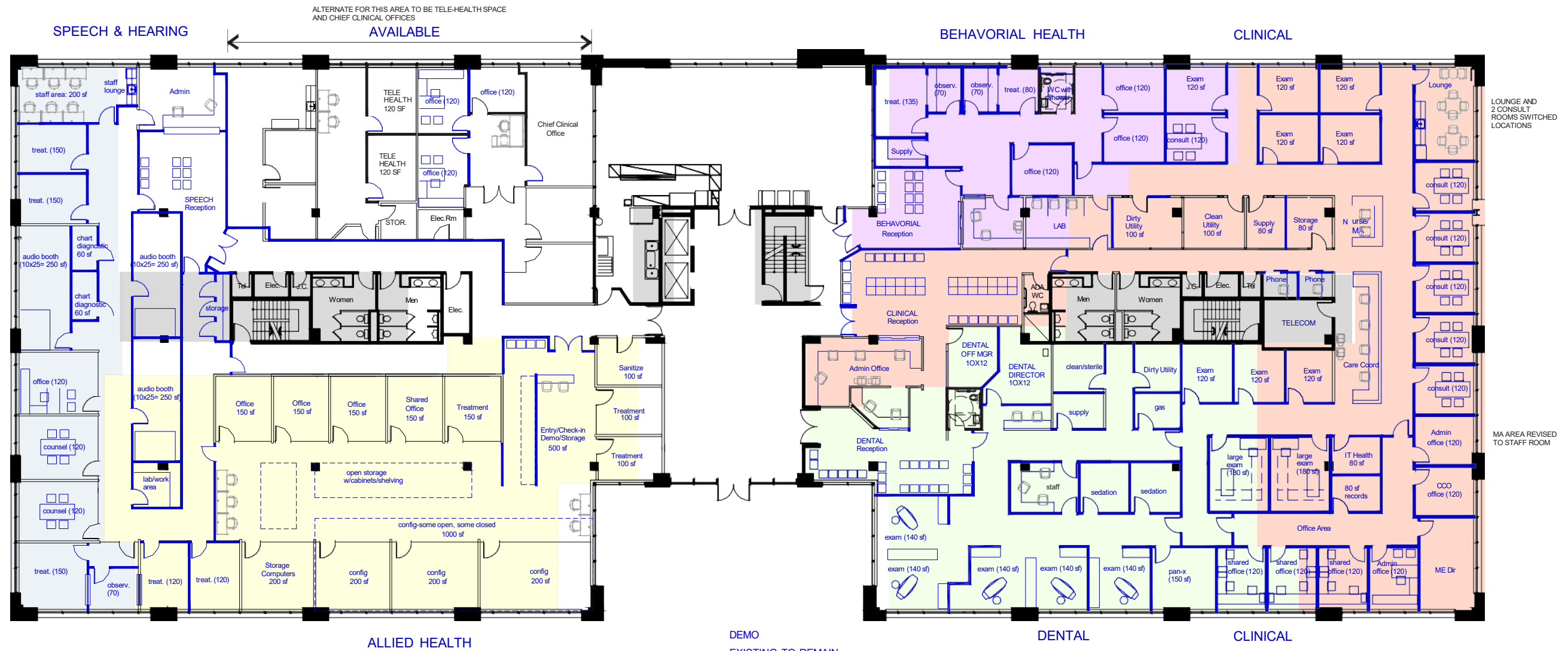
	qty	size	sf	total
reception area-desk, seating, coat closet, 4 chairs	1	20x20	400	400
IT-computer room	1	10x15	150	150
storage	1	10x15	150	150
files along workstations	40	1.5x3	4.5	180
large conf. room-20 seats with space for fixture display wall	1	20x30	600	600
conf room-12 person	1	15x20	300	300
conf room-8 person	1	12x15	180	180
showroom	1	20x15	300	300
design center	1	20x20	400	400
lunchroom, 3 tables, WC, ref, dw, coffee, microwave	1	20x20	400	400
closets	2	2x5	10	20
mail/supply	1	12x15	180	180
copy/printer alcoves	2	3x6	18	36
subtotal				3296
circulation factor: 1.40				
Total Usable SF projected support area				4614

Projected Total Usable SF Staff and Support Area Needed:

18471 Usable SF

Projected Rentable SF, assuming a 1.21 add-on factor

22349 Rentable



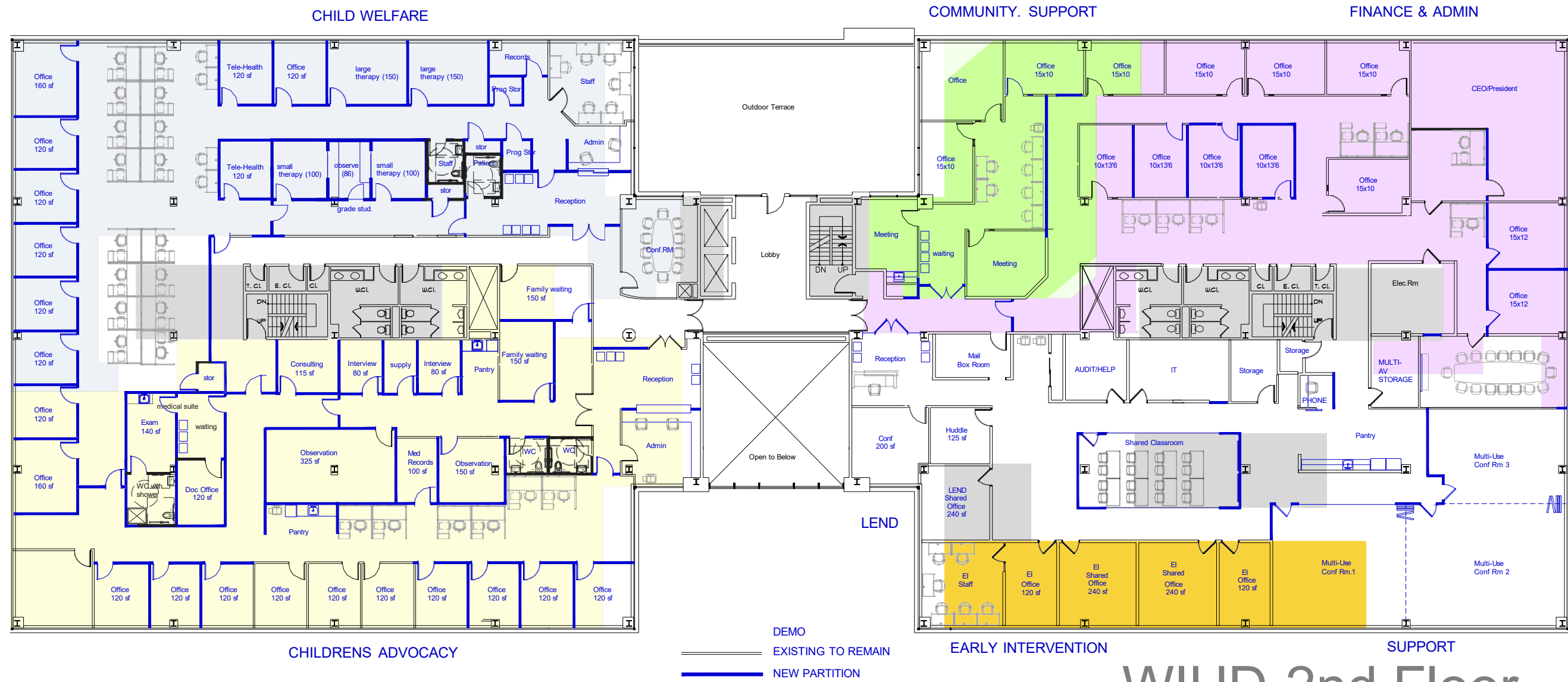
WIHD-1st Floor

80 Grasslands, Elmsford, NY
 5.31.23

KIMMERLE NEWMAN ARCHITECTS

architecture planning interiors

1109 Mt. Kemble, Harding, NJ 07960
 37 West 20th Street, NY, NY 10011
 973 538 8885



WIHD-2nd Floor

80 Grasslands, Elmsford, NY

5.31.23

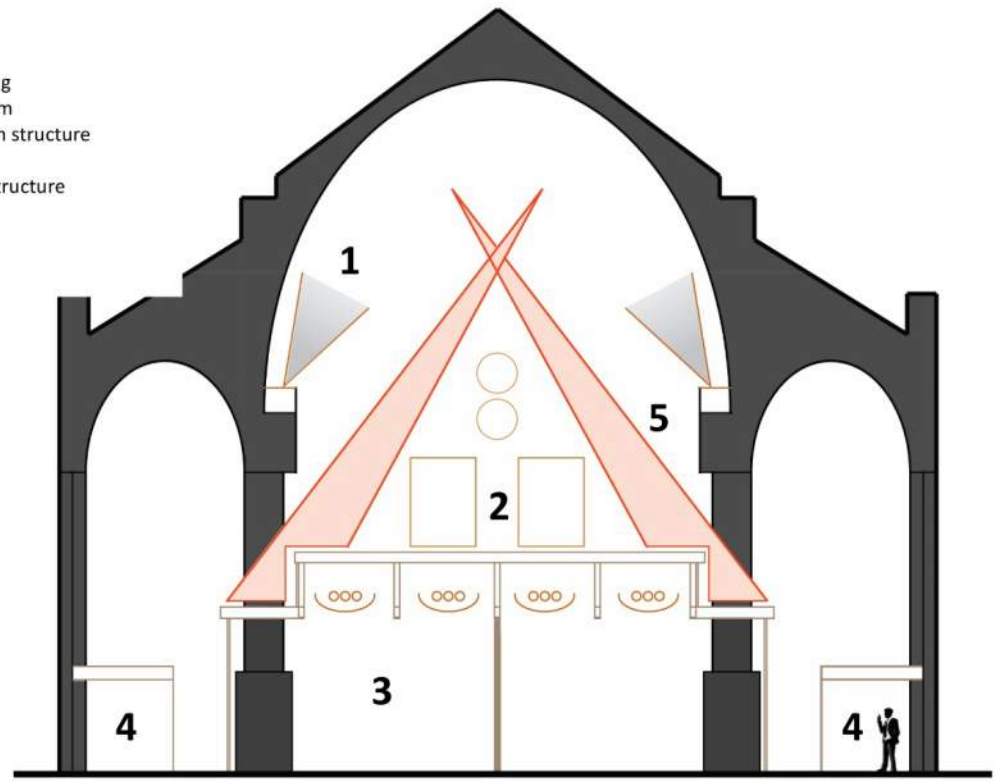
KIMMERLE NEWMAN ARCHITECTS

architecture planning interiors
 1109 Mt. Kemble, Harding, NJ 07960
 37 West 20th Street, NY, NY 10011
 973 538 8885

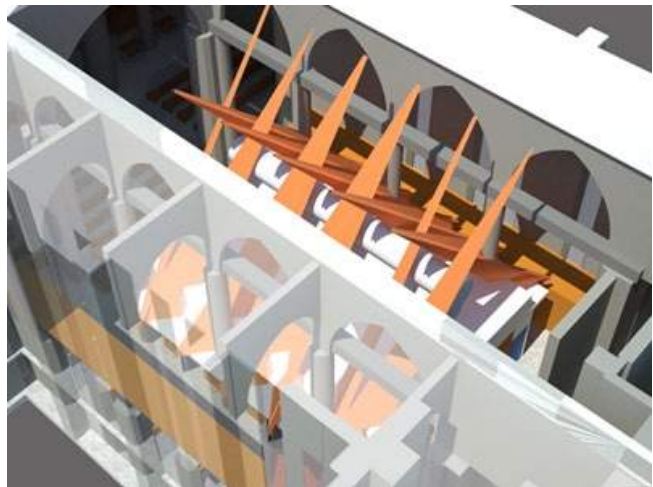
National Child Protection Facility, Sacred Heart Church | Jersey City, NJ



- Key**
- 1 Decorative lighting
 - 2 Mechanical system
 - 3 Flexible classroom structure
 - 4 Interview rooms
 - 5 Decorate fabric structure



- Key**
- 1 Reception/Registration/Greeting
 - 2 Luggage storage
 - 3 Office
 - 4 Classroom/workrooms
 - 5 Two bedroom mock house/simulation
 - 6 Viewing room/space
 - 7 New stair
 - 8 Dining area (120 seats)
 - 9 Serving area
 - 10 Phone area
 - 11 Dishwashing room
 - 12 Equipment/file storage
 - 13 Loading areas
 - 14 Kitchen
 - 15 Vending area
 - 16 Toilets
 - 17 Overnight lodging
 - 18 Typical single occupancy room
 - 19 Pantry/storage space
 - 20 New parking deck and playground



- Key**
- 1 Church and man sanctuary
 - 2 Priory/Overnight lodging facility
 - 3 Main entry/access to preservation society annex
 - 4 Community center/food pantry/recreation
 - 5 Parking deck with community playground at upper level
 - 6 Landscaped courtyard/exterior social space
 - 7 Entry to NCPTC, reception and greeting space
 - 8 Charter school



Development Context : Park Avenue at 38th Street, 37th Street



108 East 38th Street
 RENTAL, 24 STORIES, 144 UNITS
 OWNER: TOWN ASSOCIATES LLC
 DEBT: 4,500,000



57 Park Avenue
 RESIDENCE, 6 STORIES
 OWNER: REPUBLIC OF GUATEMALA
 LANDMARK DESIGNATION 1981



55 Park Avenue
 CO-OP APTS, 15 STORIES, 32 UNITS



49 Park Avenue
 RENTAL, 5 STORIES
 OWNER: NEW 49 PARK LP
 DEBT: 3,255,672 (2012)



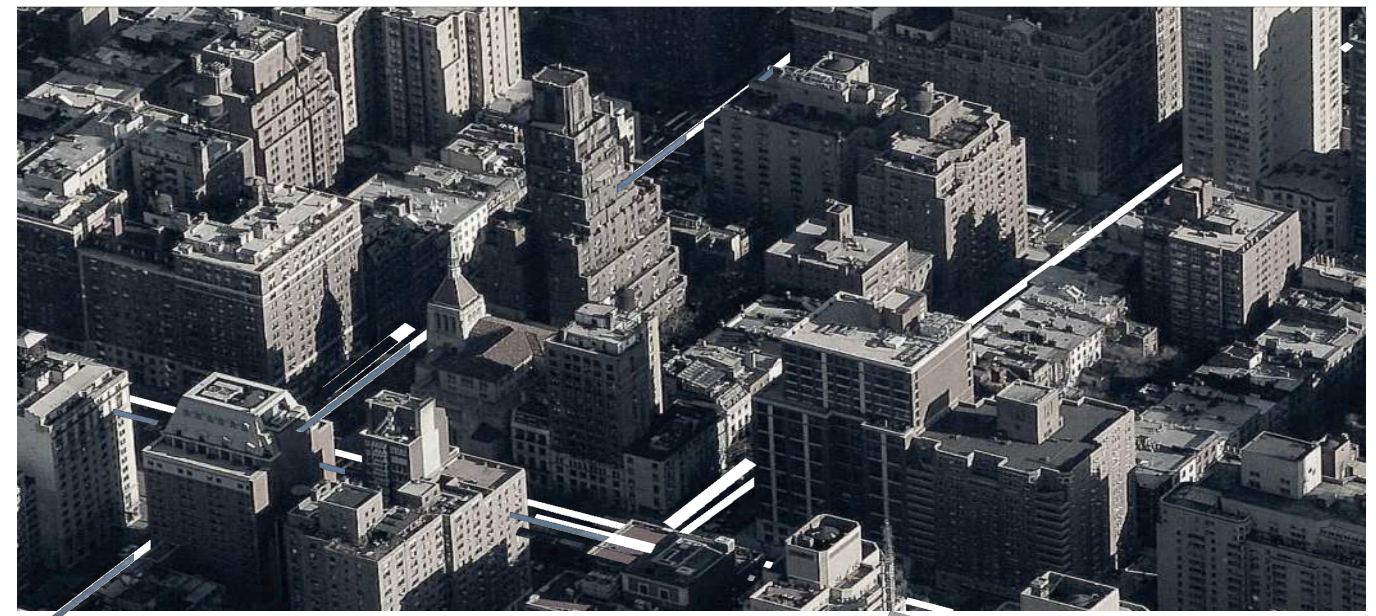
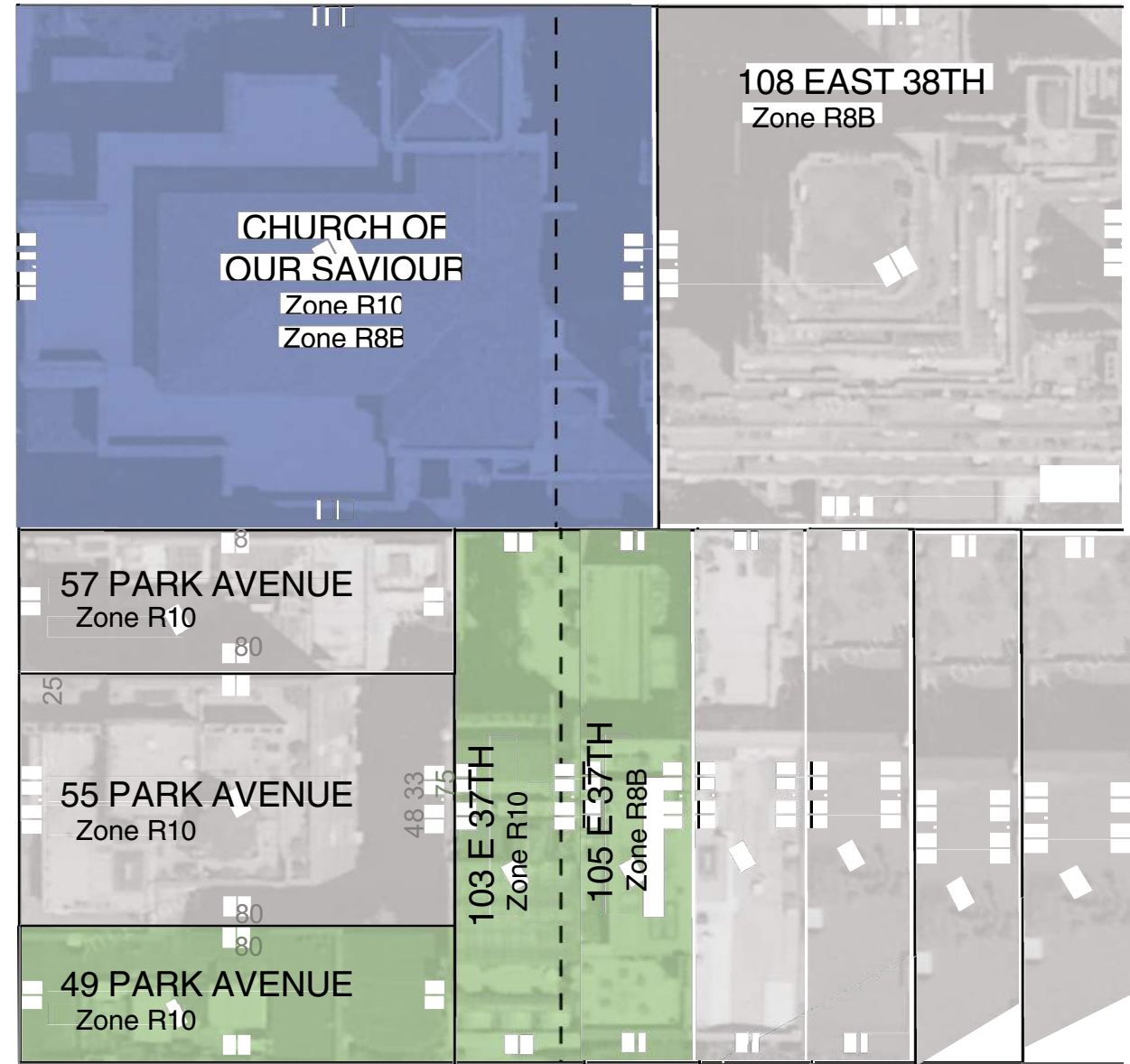
103 E 37th Street
 RENTAL, 5 STORIES (2009 CONVERSION)
 OWNER: DANIEL C BAKER
 DEBT: 4,800,000 (2005)
 SALE PRICE: 6,800,000 (2005)



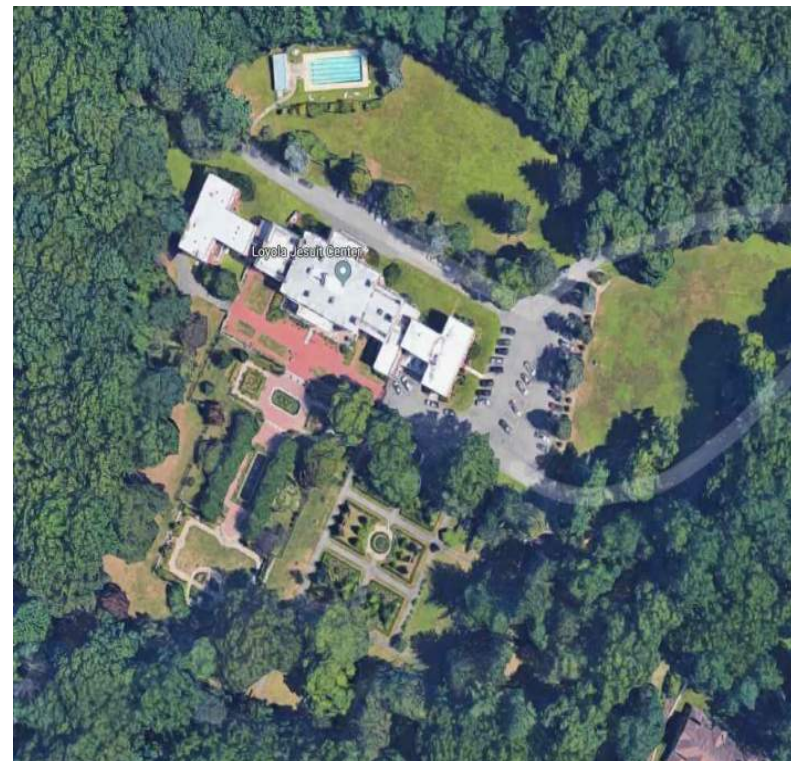
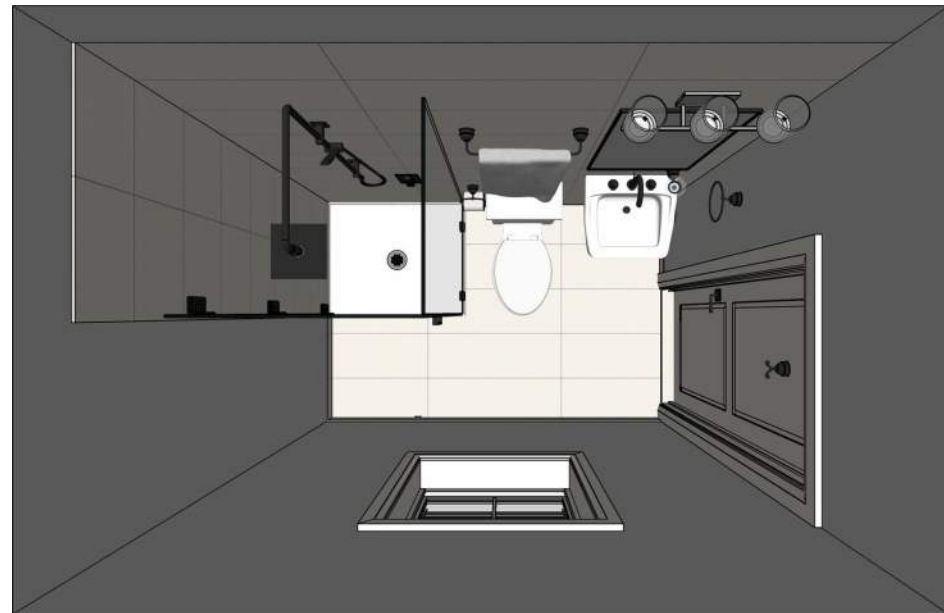
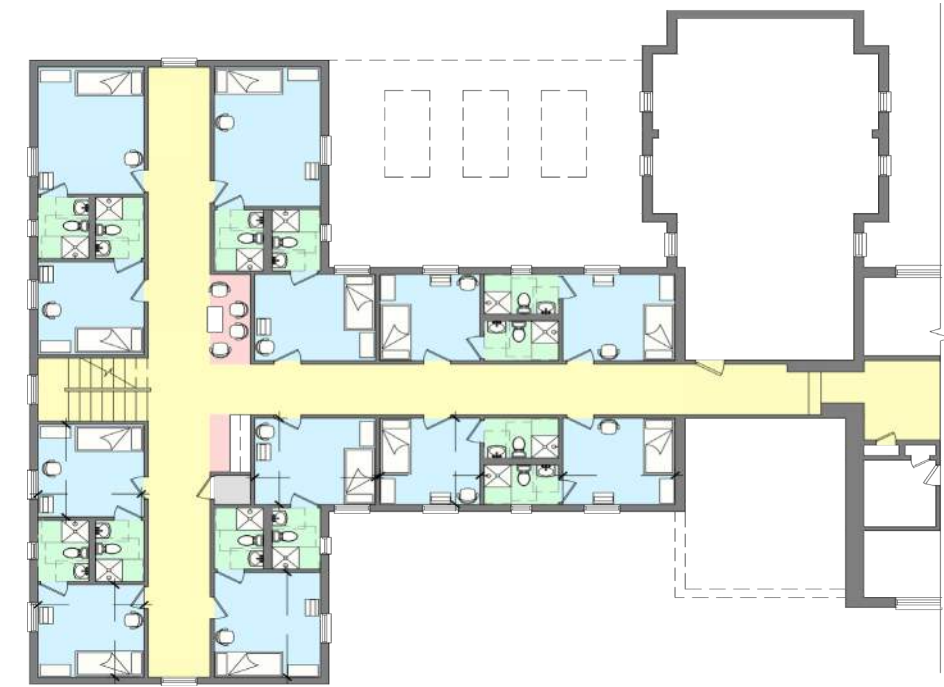
105 E 37th Street
 RENTAL, 5 STORIES, 5 UNITS
 OWNER: 105 E 37 LLC
 DEBT: 2,521,802 (2012)
 SALE PRICE: 5,151,250 (2012)



Church of our Saviour | New York, NY



Loyola Jesuit Center | Morristown, NJ



Willing Heart- Metropolitan Baptist Church | Newark, NJ

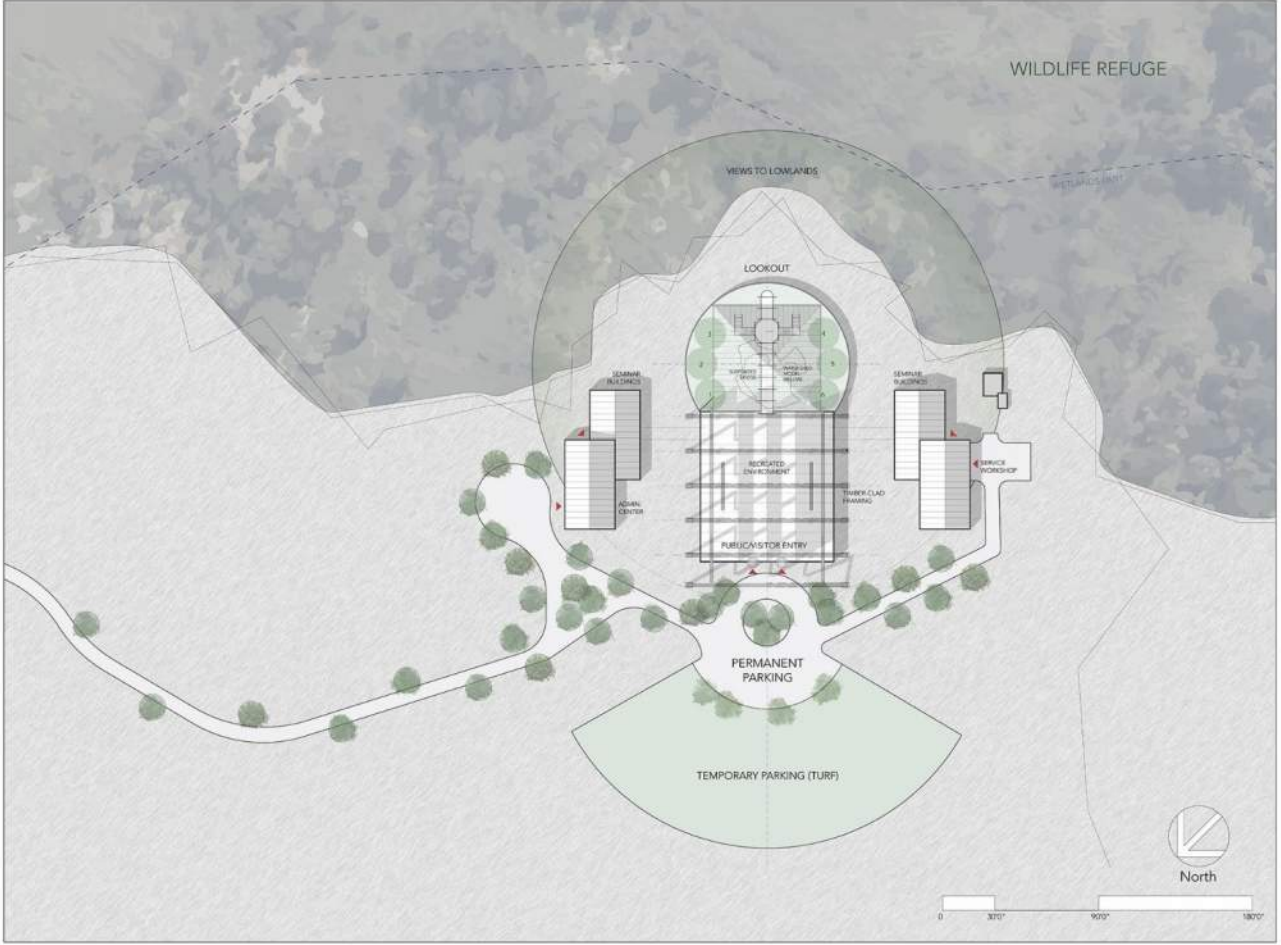
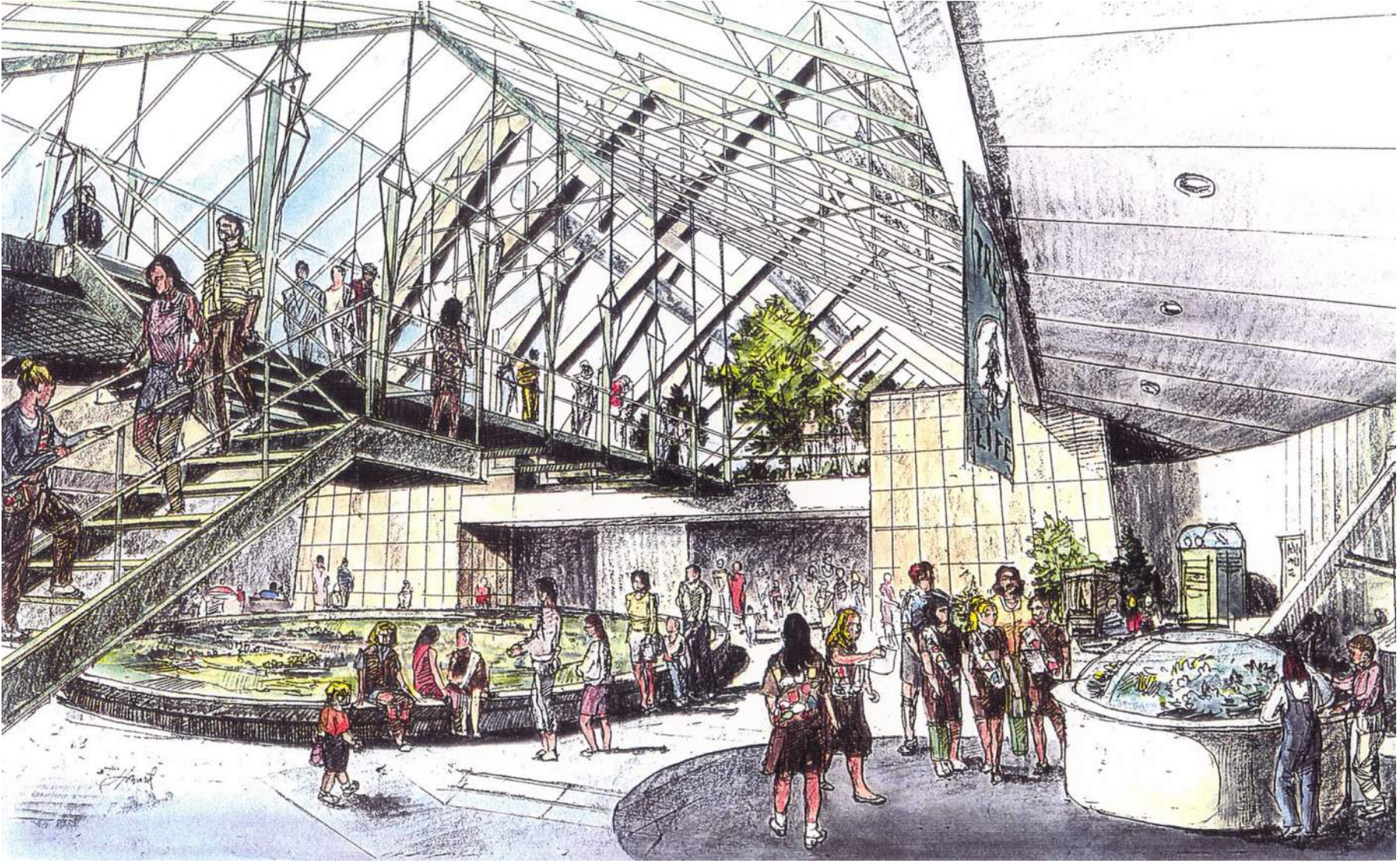
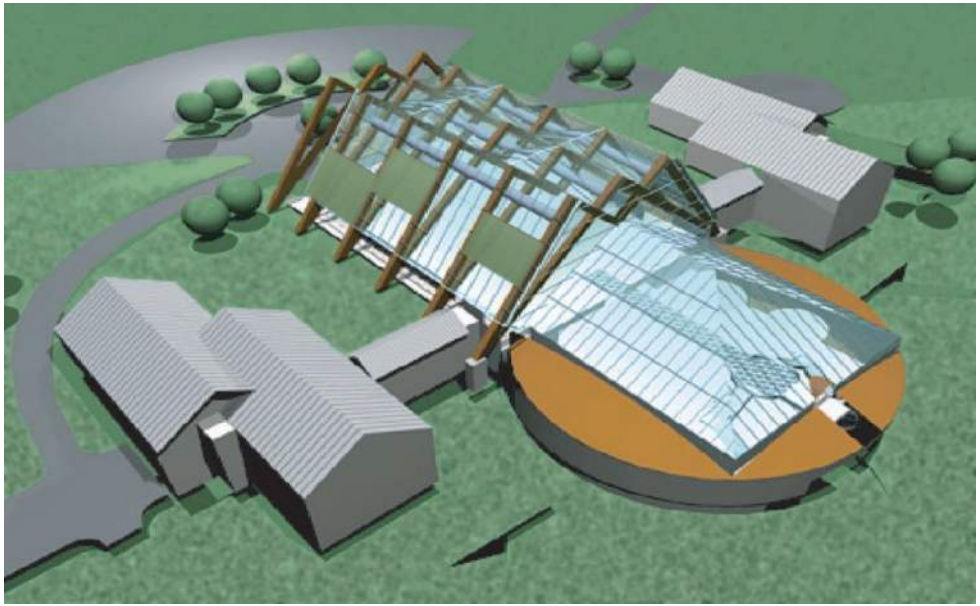
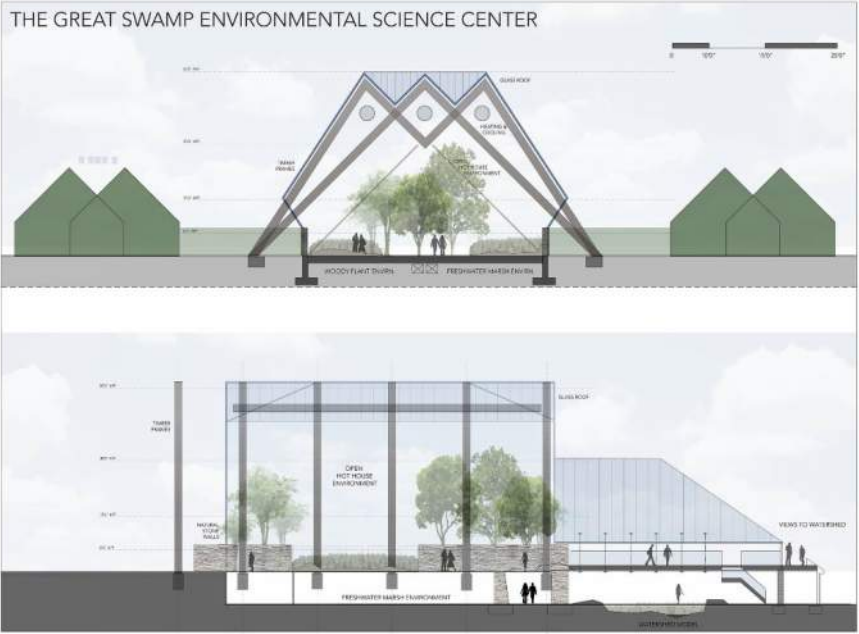




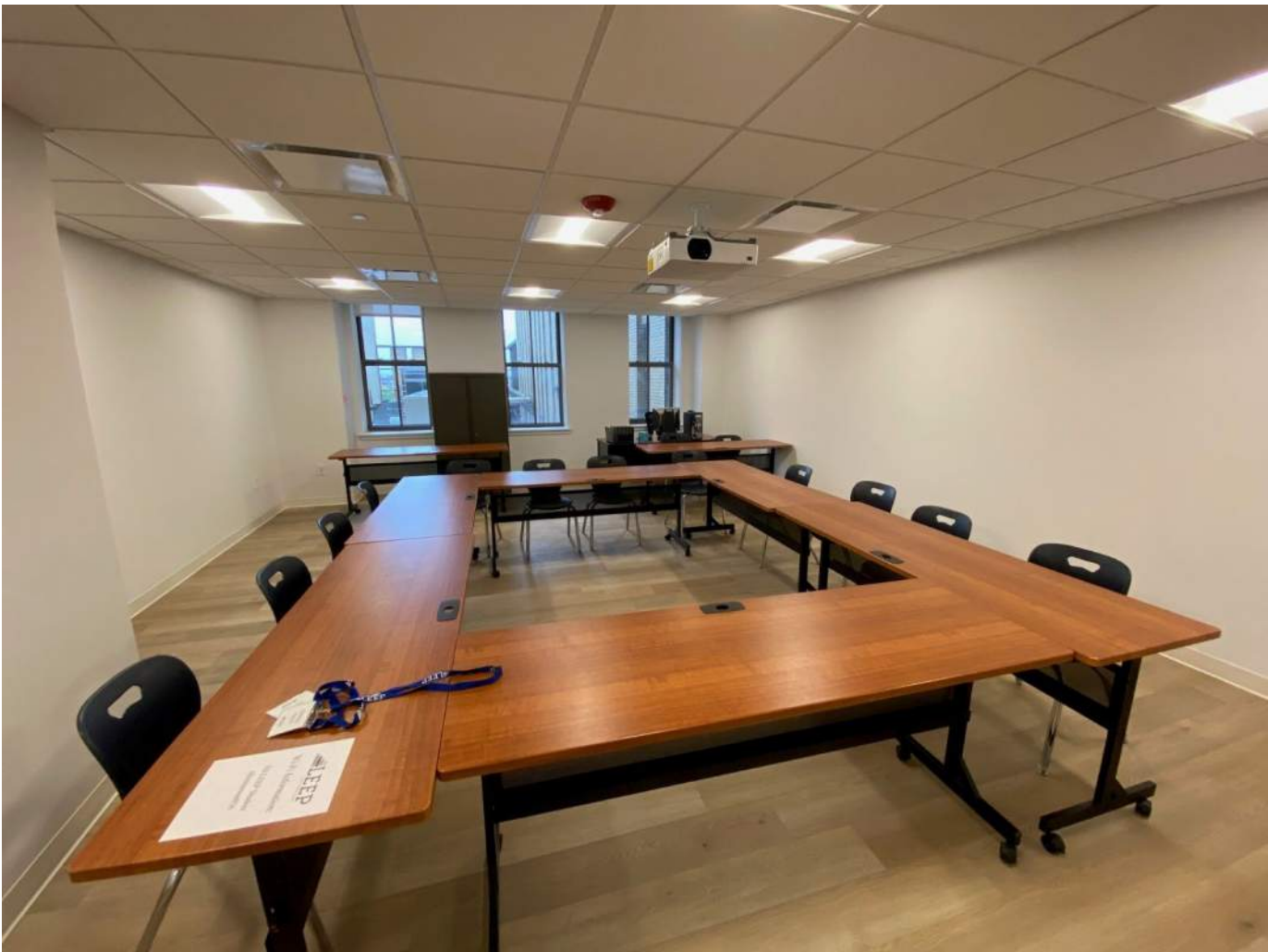
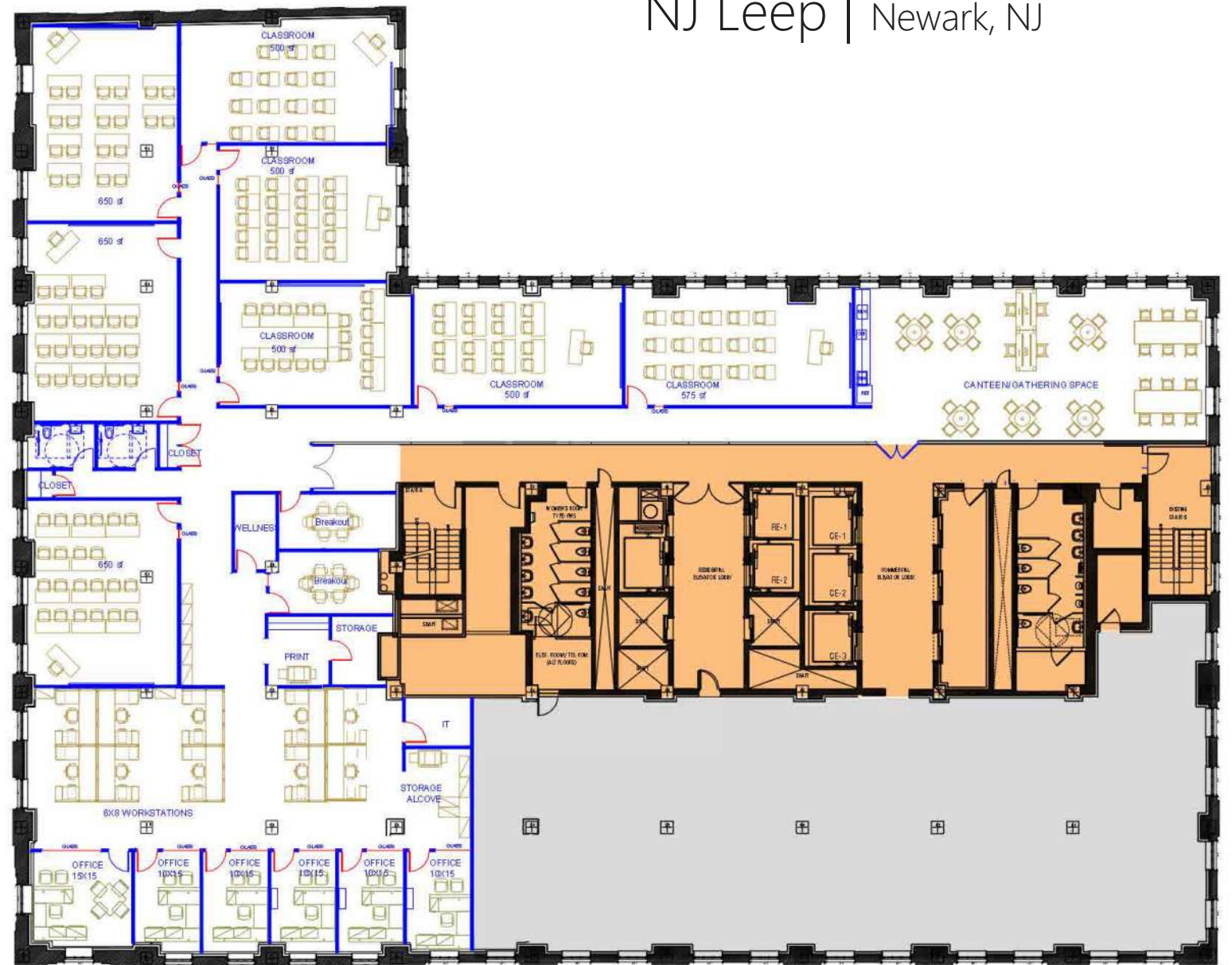
Montclair State- Newman Center | Montclair, New Jersey



Great Swamp Educational Interpretation Center | Harding, NJ





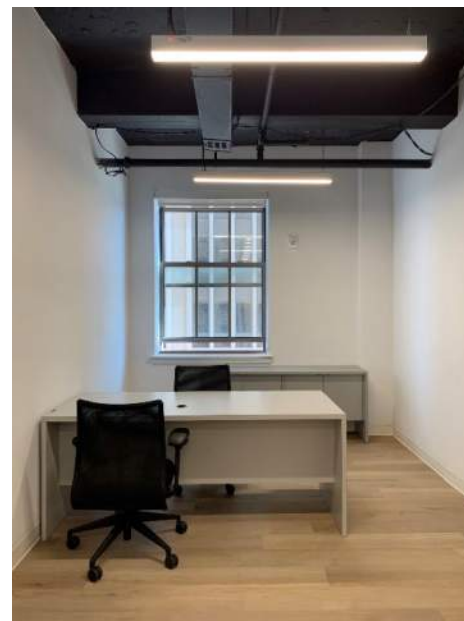


KIMMERLE NEWMAN ARCHITECTS, PA

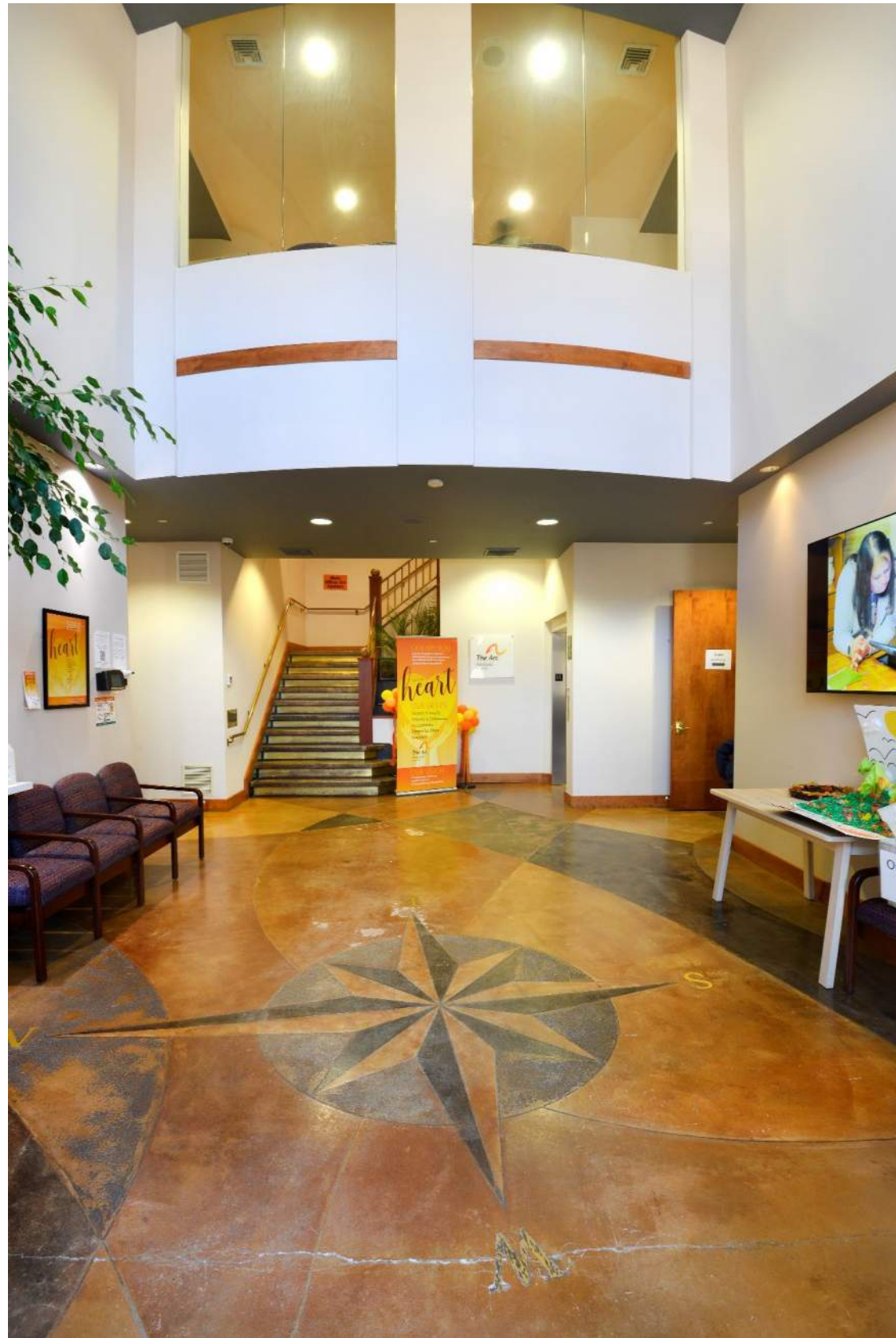
architecture
planning
interiors
1109 Mt. Kemble, Harding, NJ 07960
27 West 20th Street, NY, NY 10011
973 538 8800
www.kimmerlenewmanarchitects.com

NJ LEEP
3RD Floor, 540 Broad Street

Newark, NJ
11.18.21



Arc of Rockland- Valley College | Nyack, New York



Arc of Rockland- South Mountain | Nyack, New York



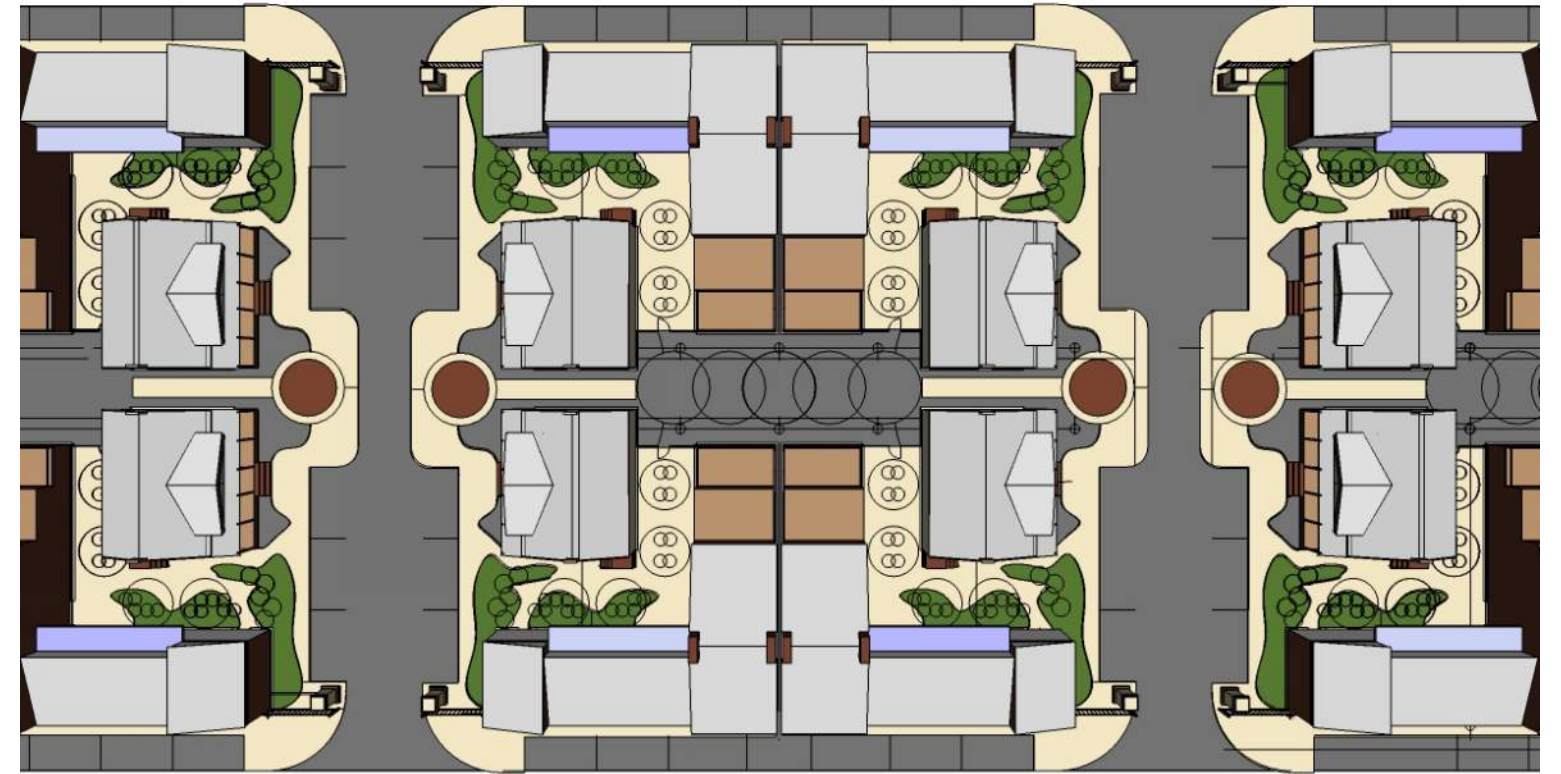
Arc of Rockland-Franklin Street | Nyack, New York



Infill Housing & Integrated parking | Hoboken New Jersey



Infill Social Housing: Belfast Model | Newark, New Jersey



Deirdre's House | Morristown, New Jersey



Ginnie's House -Child Advocacy Center | Newton, New Jersey



Sunday, October 27, 1996
NEW JERSEY SUNDAY HERALD

'Ginnie's House' refuge for kids

Advocates dedicate center for victims

By LISA MARTINS
Herald Staff Writer

NEWTON — The two detectives in the prosecutor's office sex crimes unit average one referral a day concerning the sexual abuse of a child, said Lois Ferguson, the prosecutor's office victim-witness coordinator.

Ferguson said reporting of child sexual abuse is a cyclical thing, with more reporting during the school year than over the summer. Lately, she said, the two detectives in the unit have been very busy.

When Northwest Covenant Medical Center put grant money into use this year to assist children who are sexually abused, the hospital racked up 30 open cases in six weeks, some of which are being prosecuted, said County Prosecutor Dennis O'Leary.

O'Leary, along with officials from the county government, prosecutor's office and Northwest Covenant, attended a ribbon cutting Friday to dedicate the County Park Building as the future site of the Sussex County Child Advocacy Center.

Made possible through \$115,000 of the Northwest Covenant grant money, the advocacy center will be informally known as "Ginnie's House," a place of comfort where child victims of sexual abuse can be examined and evaluated and can start their recovery, all under one roof.

"I think once people realize it is here, it will make a big difference. Ginnie's House (the name), that's really going to set a tone here to take the fear out of a very bad situation," said Sheila O'Leary, who

housed the probation department about three years ago.

It was built as a one-story structure in 1859, and the second floor was added in 1907, said Joseph Biuso, director of the county's capital projects.

The building has been home to county offices over the years and Ginnie's House is an outgrowth of the prosecutor's office. Existing staff will work there.

As an advocacy center, Ginnie's House will offer everything to the victim in one place. Instead of carting the child victim from police station to hospital emergency room to a mental health professional — causing more upset on top of the trauma of sexual abuse — a child coming to Ginnie's House will get more respect and not become a victim all over again through the process, said Freeholder Erma Gormley.

Ginnie's House will include a medical examination room and interview rooms that contain discreet cameras so police officers can view the proceedings a separate room and not crowd the child victim. There will be family waiting rooms and office space for mental health professionals and the Division of Youth and Family Services.

Architect George Kimmerle, who designed the Deidre O'Brien Child Advocacy Center in Morristown, donated his time to develop the interior schematic of the building.

The \$115,000 in grant money will be stretched to fund not only interior work but the addition of any furniture. Sen. Littell, who attended the ribbon cutting, was instrumental in getting the grant money, Gormley said.

To make the center fully operational, an additional \$100,000 in funds will be raised. Sheila O'Leary said those efforts are under way.

Photo by Kelly MILLER

ADVOCATES FOR KIDS — From left, Prosecutor Dennis O'Leary, Freeholder Erma Gormley and Sen. Robert Littell cut the ribbon during a dedication ceremony for the future Child Advocacy Center in Newton.

He said he hopes that Ginnie's House will open by the spring, when the interior work on the building is complete.

Externally, the Park Building recently underwent a \$147,000 refurbishment funded by the county freeholders. The building in recent years has been vacant and an eyesore of peeling paint. It last

chairs the Advisory Board of the Child Advocacy Center. She is the prosecutor's wife.

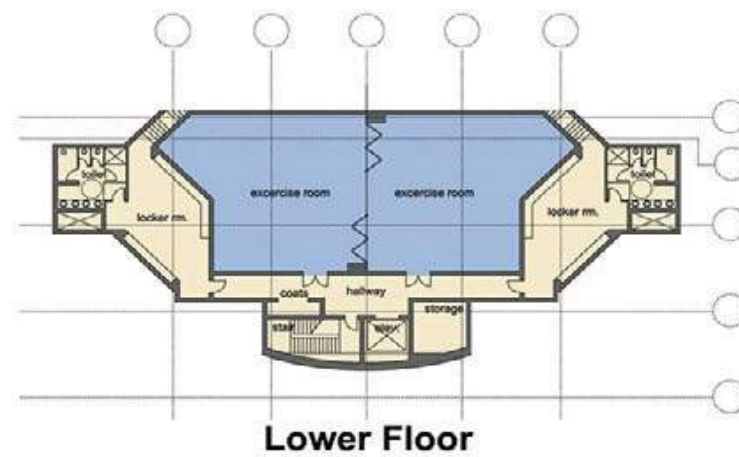
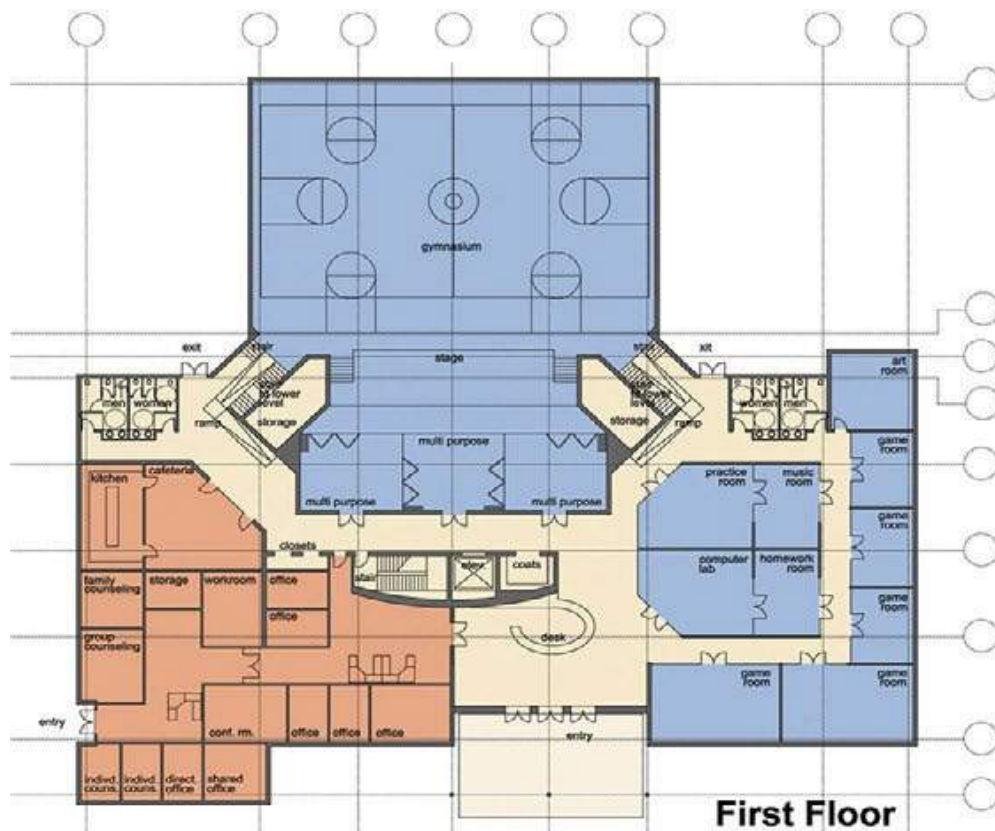
The name "Ginnie's House," also recognizes Virginia (Ginny) Littell, wife of state Sen. Robert Littell, R-24, who was a driving force behind the advocacy center, Dennis O'Leary said.



existing site layout



Teen Pride Center | Morristown, NJ





Thank You!