

# Project Experience

Religious Affiliated Engagements

## KIMMERLE GROUP

KIMMERLE NEWMAN Architects

KIMMERLE Workspace

KIMMERLE Project Management

KIMMERLE Branding Studio

# About Kimmerle

Kimmerle Group is a multifaceted architectural design, real estate planning and development firm consisting of six affiliated divisions with complementary specialties.

Our headquarters is based in Harding Township, NJ, with offices in New York City and Stonington, CT.

Our affiliated subsidiaries represent a broad range of design and real estate service offerings:

## KIMMERLE NEWMAN Architects

Thirty-year long architectural & interior design practice

## KIMMERLE Workspace

Twenty-eight-year long product & equipment purchasing agent

## KIMMERLE Urban Studio

Research based real estate, planning & urban design services

## KIMMERLE Project Management

Services to corporate, medical & public entities

## KG Real Estate Services

Real estate development & management company

## KIMMERLE Branding

Branding & image creation for public & private entities

**30** Years of proven track record

**30+** Staff & support team members

Ongoing Projects nationally

FL CA NY AZ NJ IL

Int'l Projects

Canada, India, Egypt, Costa Rica

# Project Team

## Leadership

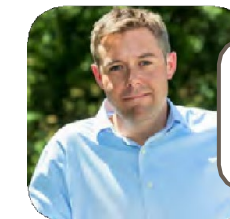


George J. Kimmerle  
President and Sr. Partner



Paul Newman  
Vice President & Sr. Partner

## Architecture & Design



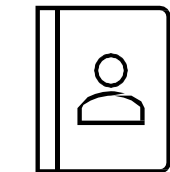
William Kimmerle  
Principal | Partner



Cindy Cui  
Partner



Richard Jecmen,  
AIA  
Project Director



Architects,  
Designers &  
Support Staff

## Furniture & Equip.



Marleni Galindo  
Project Manger

## PM Services



Raquel Da Silva  
Project Manager

# KIMMERLE NEWMAN Architects

## Kimmerle Group’s Architectural and Interior Design Division:

Do you have an unusual assignment, a challenging project, or a unique vision for something unusual? At KNA we thrive on these types of engagements. As architects and real estate development professionals, we are able to work well outside the parameters of typical architecture firms, bringing together real estate development, planning, design, and so much more

With decades of experience in the planning and execution of a broad range of private, corporate, medical, and institutional facilities, our work has won numerous awards. The commercial and residential projects we have designed and executed are enjoyed by millions of people across the United States and around the world

- Multi-family housing
- Hotels
- Office buildings
- Multi-use corporate campuses
- Schools – Higher Education
- Hospitals and medical centers

## Medical Facility Specialists

KNA has an established architecture and design practice in the area of medical facilities. Our work includes architecture, interior design, master planning, and development advisory services. Our different practice specialties include:

- Surgery centers
- Radiology/imaging/MRI centers
- Cardiology units and offices
- Dialysis centers
- Oncology/infusion centers

In addition to dozens of medical offices and health care centers, the firm has designed over a dozen regional hospitals/health care systems in the New York/New Jersey tri-state area.

## Strategic Partner in Real Estate Development

For decades, development companies based in New York and New Jersey have relied on KNA as their building architect for on-call services. We have built close working relationships with some of New Jersey’s leading industrial and warehouse owners, and have an extensive network of corporate, brokerage, and development partners. This professional network, coupled with our architecture expertise, make us a particularly effective strategic partner for market-focused opportunities including:

- Retrofits of existing multi-tenant buildings
- The design of new buildings and additions
- Development of plans for prospective tenants

- Creating strategies for leasing potentials in the market

## Historic Preservation and Restoration

At Kimmerle Newman Architects, historic preservation of residential and commercial structures is in our DNA. In fact, we are one of only a handful of firms statewide designated as preservation architects by the New Jersey Department of Building and Construction.

Our special affinity for preservation, sustainability, and expertise is evident in the redevelopment and conversion of historic sites as well as rehab and renovation projects. We take our focus on functional sustainability to heart and are proud that Kimmerle Group is moving soon to a LEED-certified building.

## Giving Back to Non-Profits

New Jersey’s non-profit organizations do important work in their communities, and KNA is proud to support them. Since its inception, KNA has provided architectural and planning services, largely on a pro bono basis, to a long list of New Jersey-based charitable organizations, non-profit agencies, and institutions. It has been immensely gratifying to help them reach their community outreach objectives and serve their constituents, through the design and completion of:

- Food pantries
- Visitor’s centers
- Teen centers
- Parks, recreation improvements
- New buildings
- Signage and graphics
- Honor walls

## Selected Projects

Aeropostale - 25,000 SF.	130 W. 33rd St. NY, NY
Seneca Insurance Headquarters - 18,000 SF.	160 Water Street, 16th Floor, NY, NY
National Insurance Regional Office - 12,000 SF.	415 Madison Avenue, 9th Floor, NY, NY
Travelport Executive Offices - 9,700 SF.	405 Lexington Ave., 57th Floor, NY, NY
Realogy - 30,000 SF.	West 58th St., NY, NY
Odyssey Reinsurance - 28,000 SF.	17 State Street, 29th, 30th Floors, NY, NY
Odyssey Reinsurance - 24,000 SF.	140 Broadway, 39th Floor, NY, NY
Gulliver Travel Services - 23,500 SF.	5 Penn Plaza, 5th Floor, NY, NY
Meredith Publishing - 30,000 SF	375 Lexington, 7th, 9th & 10th Floors, NY, NY
IMS Health - 14,000 SF.	485 Lexington Ave, 26th Floor, NY, NY

# Project Listing

## RELIGIOUS AFFILIATED PROJECTS

### Sacred Heart Cathedral

Jersey City, NJ

National Training Center

Ongoing conversion of facilities including renovation of Main Church, living quarters, and dining areas.

### Oheb Shalom Congregation

South Orange, New Jersey

Classroom renovations.

Playground redesign.

Parking area reorientation.

New barrier free entrances and elevators

Site improvements including

Regrading, Retaining walls and planting areas.

Signage options and improvement layouts

And zoning analysis.

### Our Savior Church, NYC

Church of our savior, 2<sup>nd</sup> and 3<sup>rd</sup> floor rectory renovations

Church of our savior, fire alarm upgrade

Church of our savior, bishops' residence

Church of our savior, air rights planning review

### Salvation Army Women's Shelter

Morristown, NJ

Funding through Internal Sources

### Deidre O'Brien Child Advocacy Center

Morristown, NJ

Winner AIA National Award of Merit

County, private funding sources

### Sussex County Child Advocacy Center

Newton, NJ

County, state, private funding sources

### Interfaith Food Pantry

Morristown, NJ

New warehouse and office, arranged donated furniture

Private funding sources

### Easter Union County YMCA Step Up Housing

Elizabeth, NJ

Multiple funding source

### Loyola House of Retreats

Morristown, NJ

#### A component of the Archdiocese of Paterson/RCC.

A full renovation and restoration of all guest rooms (68 in all) over four floors and includes common areas and meeting / study spaces.

Project is the restoration of an 1890s estate house - upgrades to the original building and all guest wings added over time.

Full window replacement, facade repairs, new elevator installation and core areas and handicap access ways including exterior and interior ramps and lifts. Installation of private bathrooms and new individually controlled heating and cooling systems in each guest room. Hallway upgrades including wall and floor finishes, lighting, fire sprinklers and other related repairs and upgrades.

Budget of \$3.5-4.5 mil depending on final alternates elected.

Project is in the bidding phase with local bldg. dept review and permitting is underway

Additional areas of work include misc. preservation analysis and design for on site historic Gatehouse and other ancillary buildings on campus.

KG/KNA scope includes architectural design, technical documents, interior finishes, furnishings and oversight of structural, mech and electrical engineers and other consultants retained directly by the owner

#### Childcare/Daycare Centers: includes renovated and new facilities and buildings

2001

#### Red Caboose Daycare

Philipsburg, New Jersey

#### 2001. Morristown Teen Center

Morristown, New Jersey

2002-04

#### YMCA of Eastern Union County

Rahway Childcare Playground  
and Activity Center, Toilet Facility

#### Affordable Housing:

1993.

#### Episcopal Community Development Corp.

St. James Housing Corporation  
44 Unit Affordable Housing Project  
Newark, NJ  
State, church, and private funding sources

1993.

#### Episcopal Community Development Corp.

St. James Housing Corporation  
Multiple Infill Site Affordable Housing prototypes  
for Newark, Asbury Park, and Trenton, NJ  
State, church, and private funding sources

2003-04

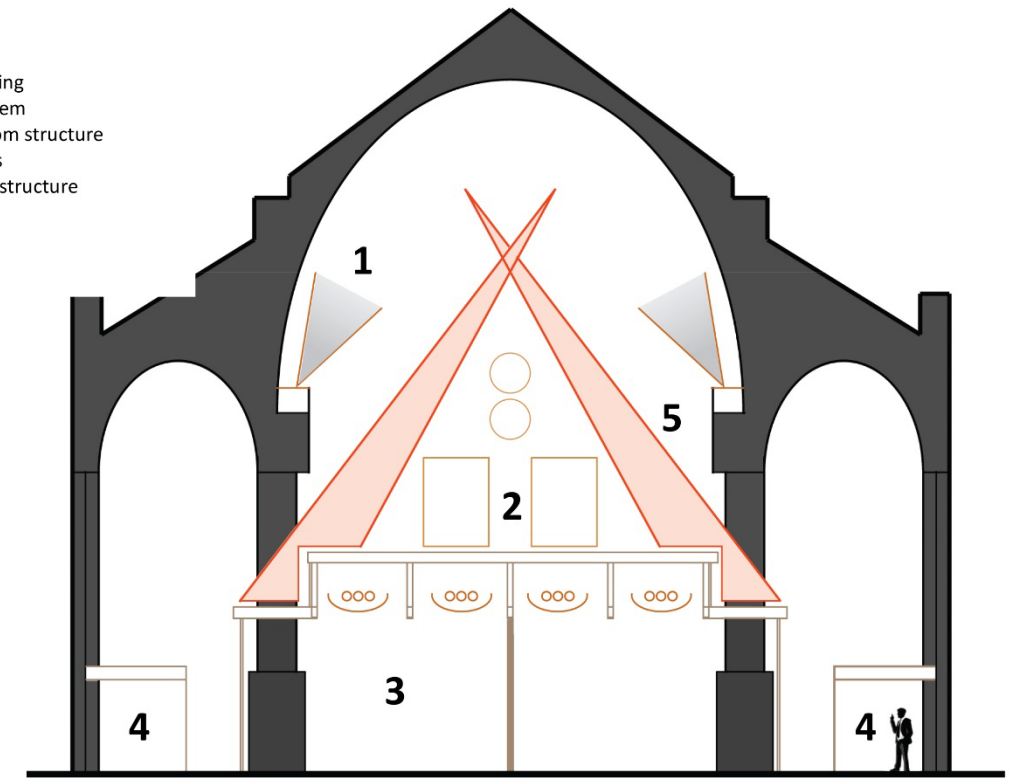
#### Spectrum for Living

Disabled Adult Living Center Expansion  
Closter, NJ  
Medicaid, private funding sources

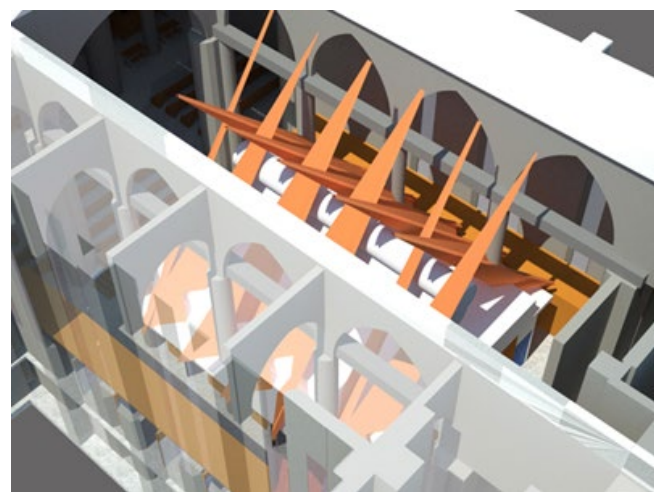
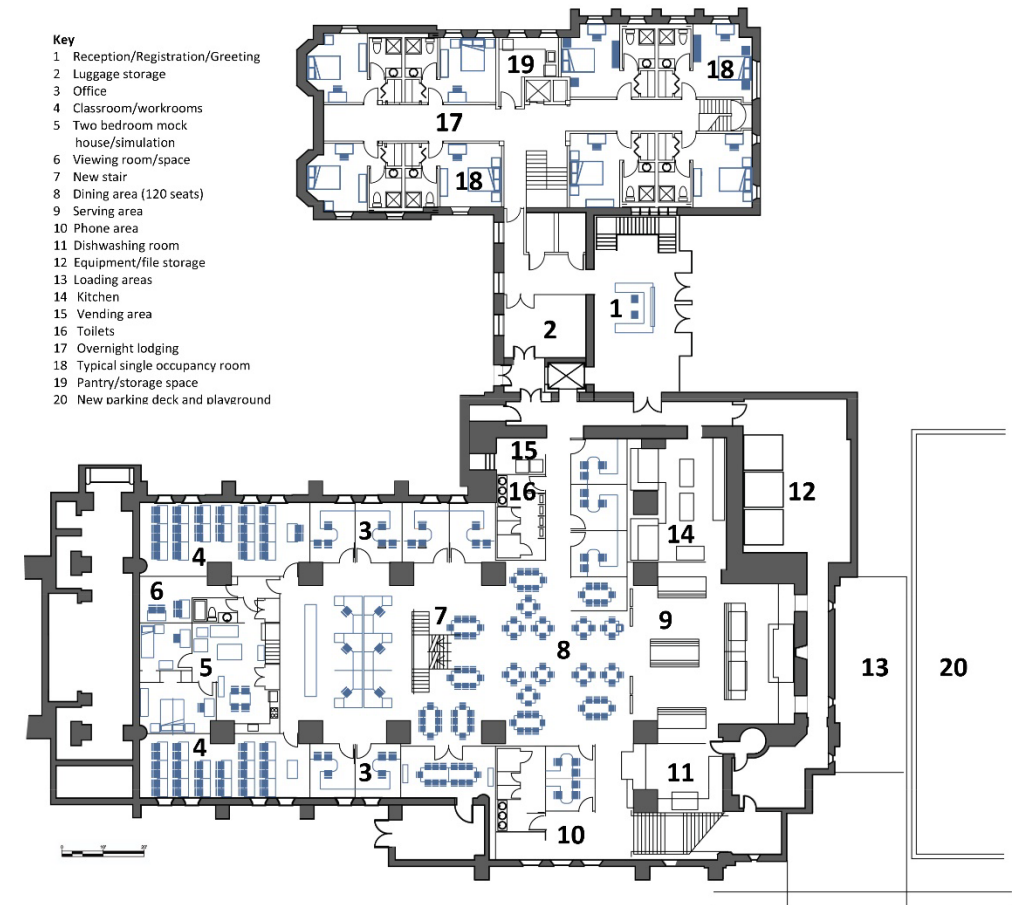
# National Child Protection Facility, Sacred Heart Church | Jersey City, NJ



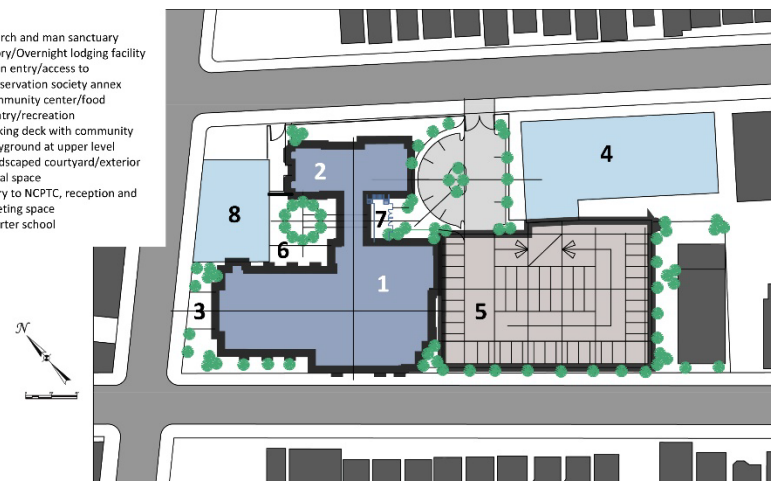
- Key**
- 1 Decorative lighting
  - 2 Mechanical system
  - 3 Flexible classroom structure
  - 4 Interview rooms
  - 5 Decorate fabric structure



- Key**
- 1 Reception/Registration/Greeting
  - 2 Luggage storage
  - 3 Office
  - 4 Classroom/workrooms
  - 5 Two bedroom mock house/simulation
  - 6 Viewing room/space
  - 7 New stair
  - 8 Dining area (120 seats)
  - 9 Serving area
  - 10 Phone area
  - 11 Dishwashing room
  - 12 Equipment/file storage
  - 13 Loading areas
  - 14 Kitchen
  - 15 Vending area
  - 16 Toilets
  - 17 Overnight lodging
  - 18 Typical single occupancy room
  - 19 Pantry/storage space
  - 20 New parking deck and playground



- Key**
- 1 Church and man sanctuary
  - 2 Priory/Overnight lodging facility
  - 3 Main entry/access to preservation society annex
  - 4 Community center/food pantry/recreation
  - 5 Parking deck with community playground at upper level
  - 6 Landscaped courtyard/exterior social space
  - 7 Entry to MCPFC, reception and greeting space
  - 8 Charter school



# Church of the Most Precious Blood | New York, NY



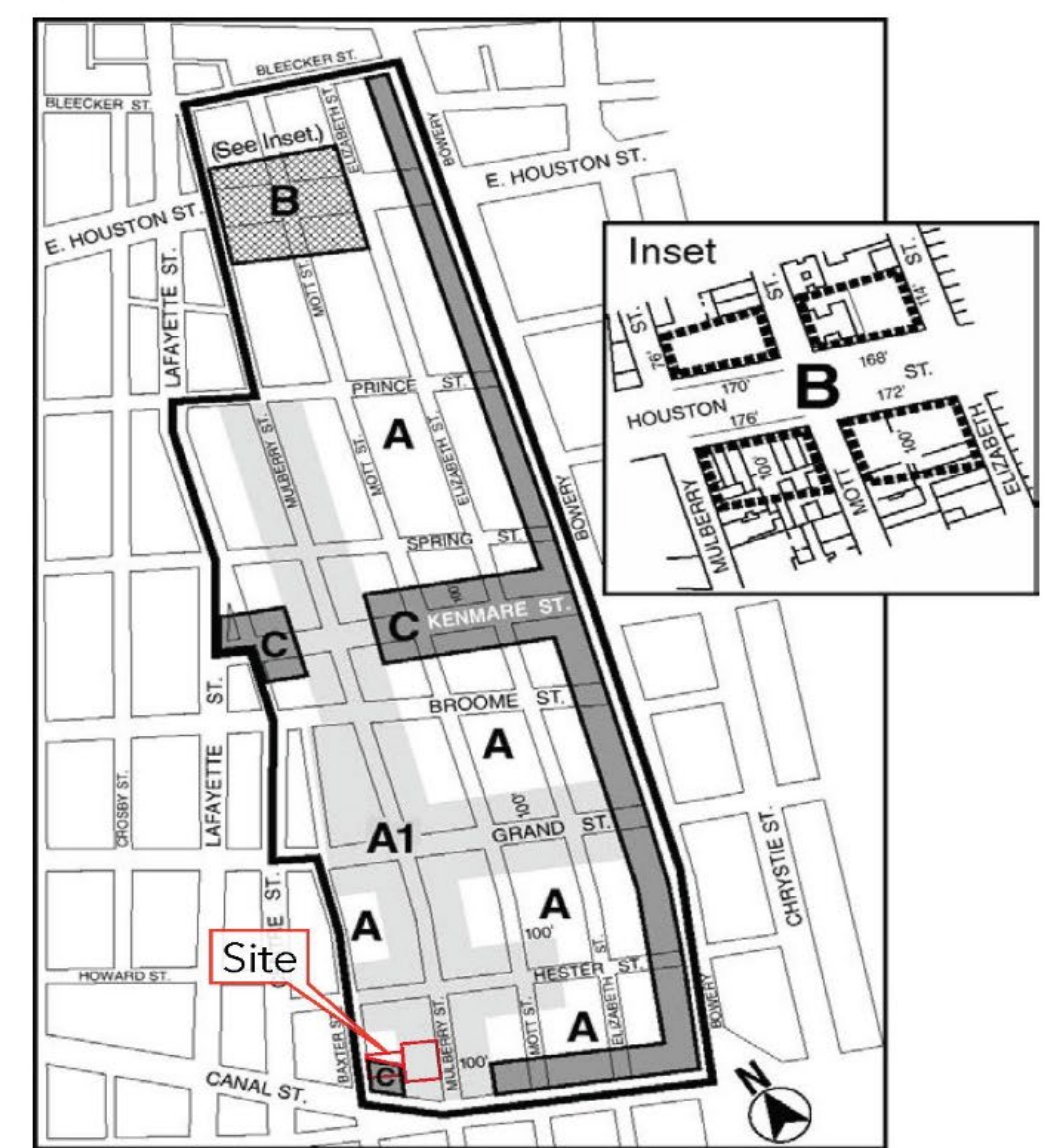
Satellite



Tax Map



Special Little Italy District



Zoning



District and Subdistrict



- District Boundary
- Preservation Area
- A1-Mulberry Street Regional Spine
- Houston Street Corridor
- Bowery, Canal, Kenmare Street

Development Context : Park Avenue at 38th Street, 37th Street



**108 East 38th Street**  
 RENTAL, 24 STORIES, 144 UNITS  
 OWNER: TOWN ASSOCIATES LLC  
 DEBT: 4,500,000



**57 Park Avenue**  
 RESIDENCE, 6 STORIES  
 OWNER: REPUBLIC OF GUATEMALA  
 LANDMARK DESIGNATION 1981



**55 Park Avenue**  
 CO-OP APTS, 15 STORIES, 32 UNITS



**49 Park Avenue**  
 RENTAL, 5 STORIES  
 OWNER: NEW 49 PARK LP  
 DEBT: 3,255,672 (2012)



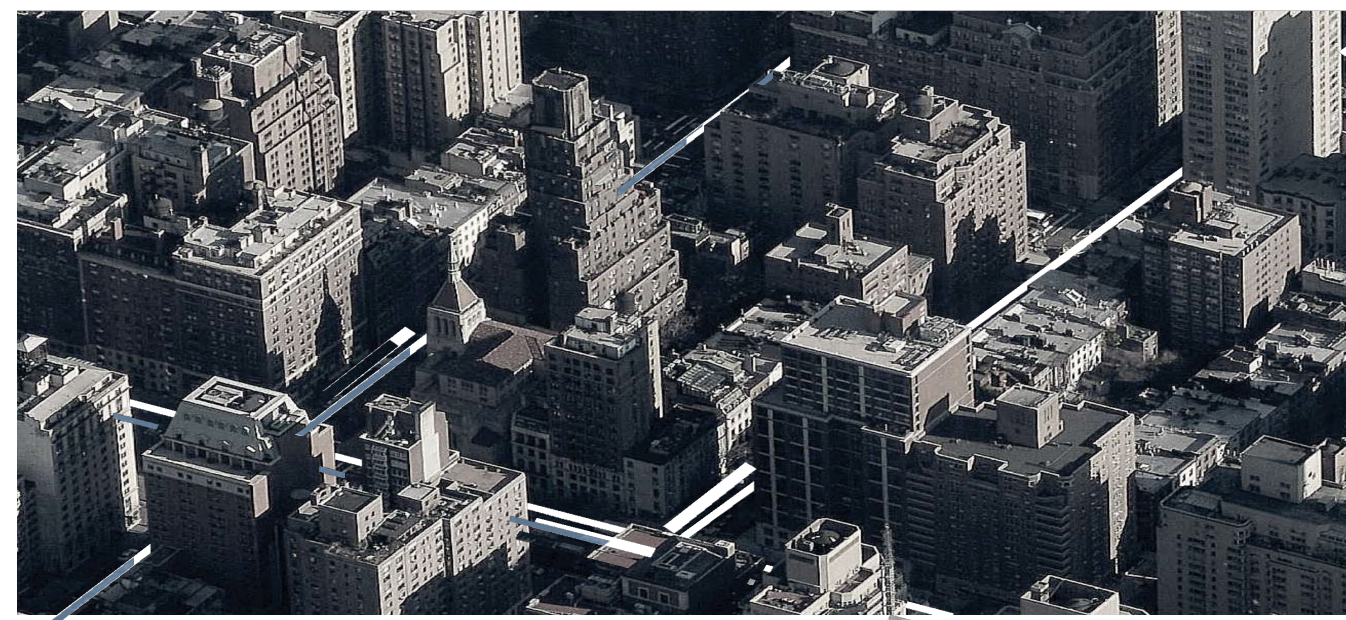
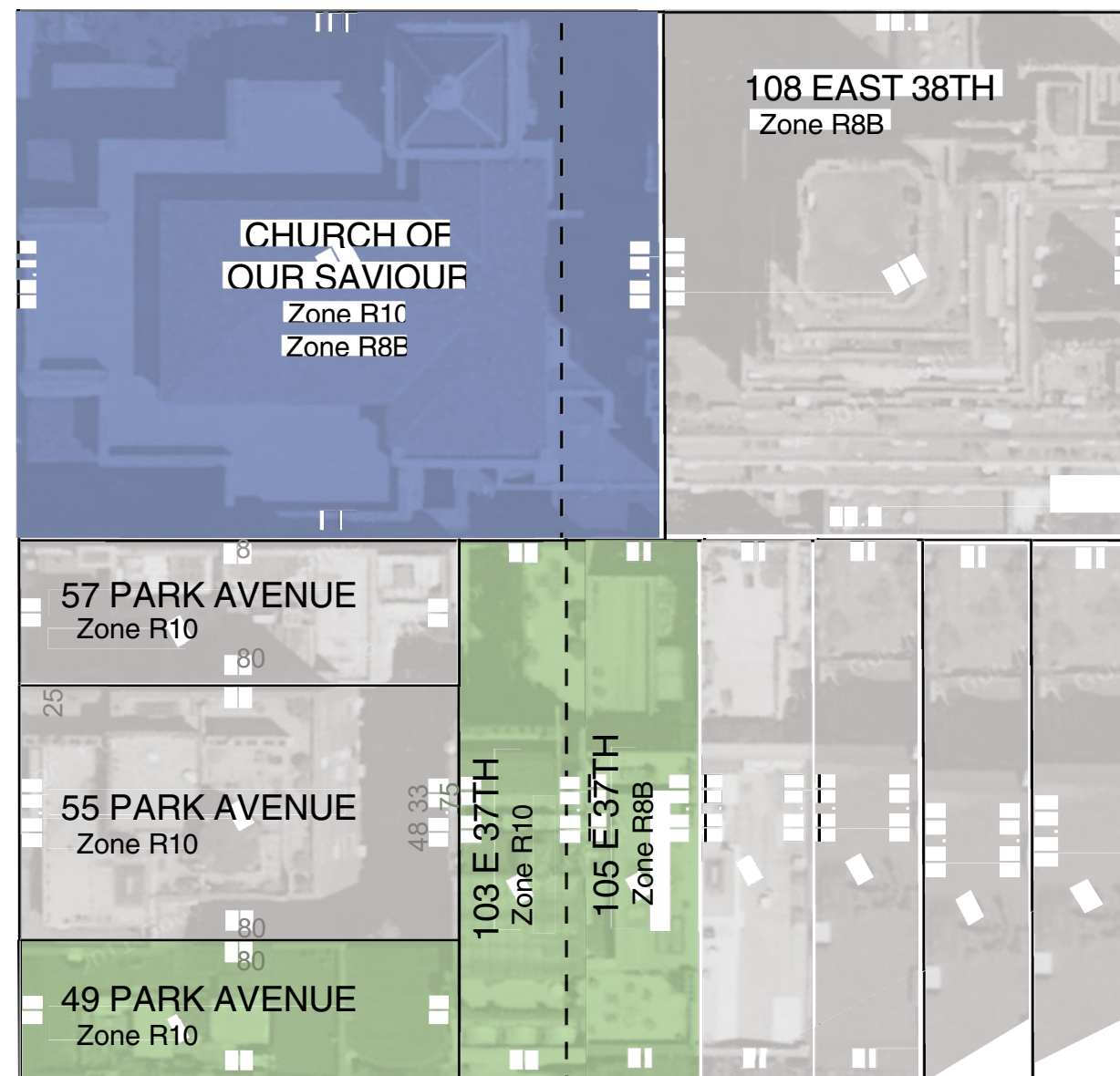
**103 E 37th Street**  
 RENTAL, 5 STORIES (2009 CONVERSION)  
 OWNER: DANIEL C BAKER  
 DEBT: 4,800,000 (2005)  
 SALE PRICE: 6,800,000 (2005)

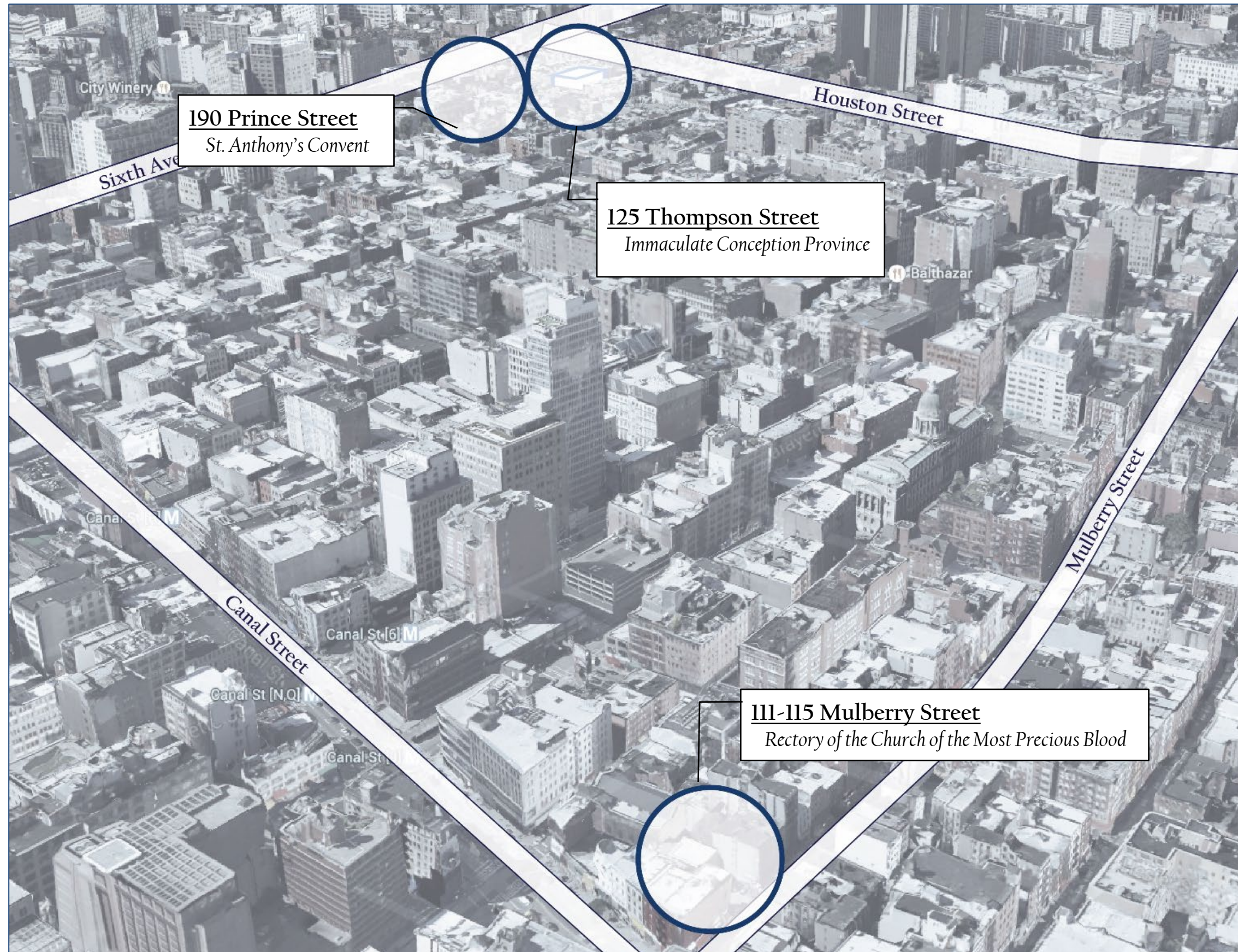


**105 E 37th Street**  
 RENTAL, 5 STORIES, 5 UNITS  
 OWNER: 105 E 37 LLC  
 DEBT: 2,521,802 (2012)  
 SALE PRICE: 5,151,250 (2012)



Church of our Saviour | New York, NY





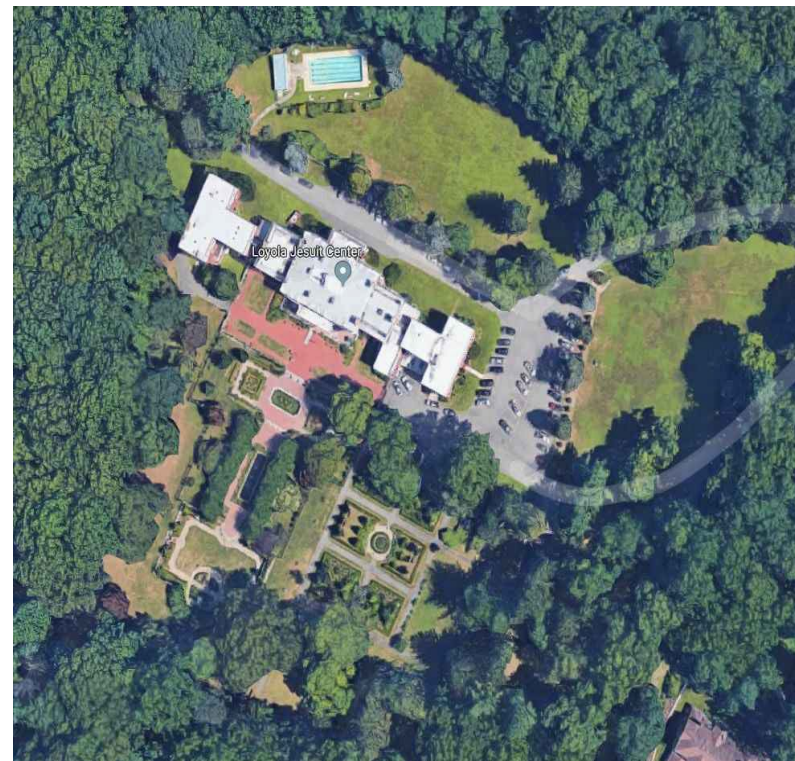
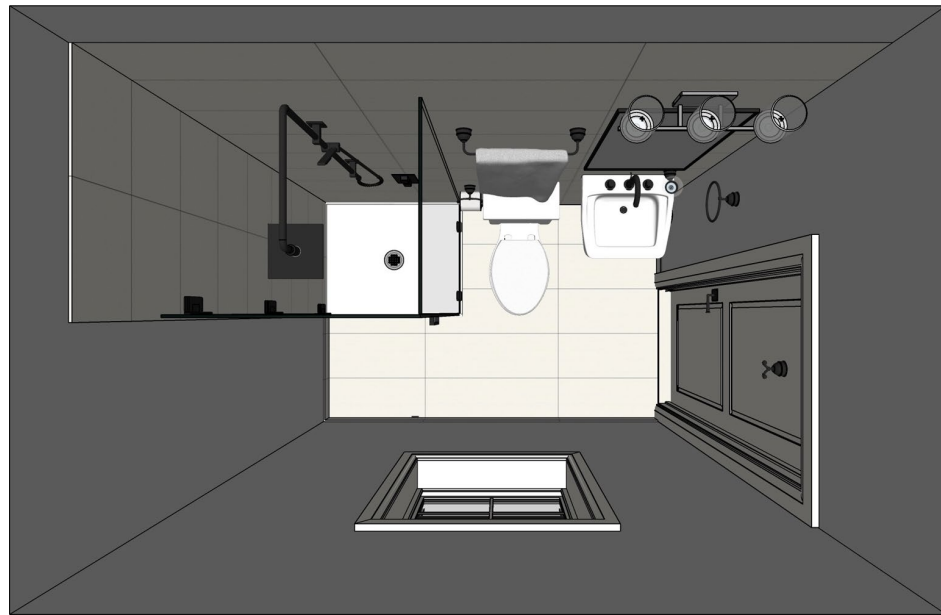
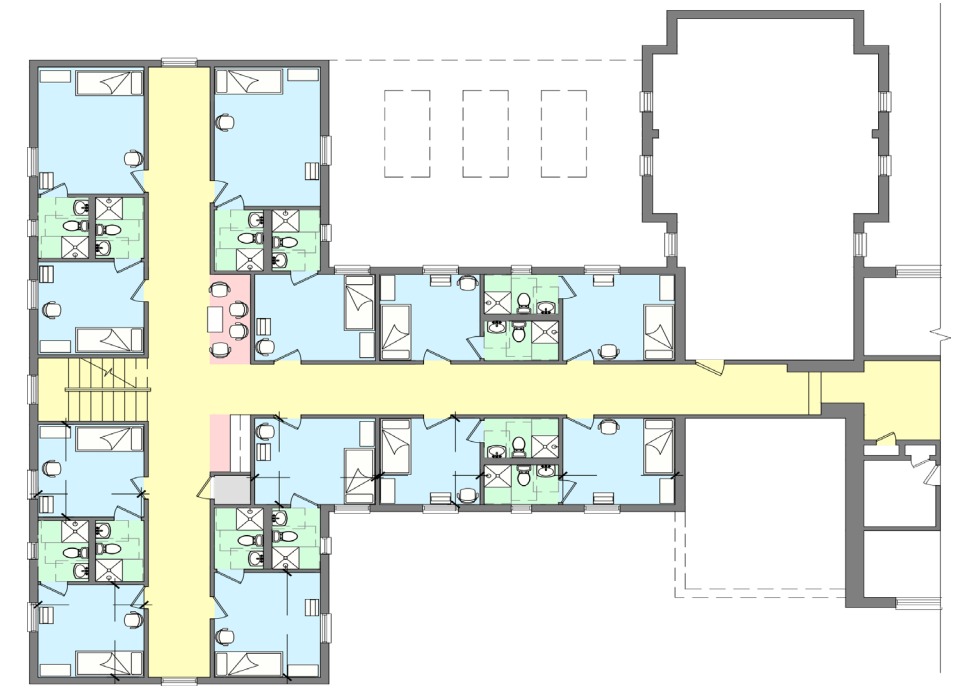
**190 Prince Street**  
*St. Anthony's Convent*

**125 Thompson Street**  
*Immaculate Conception Province*

**111-115 Mulberry Street**  
*Rectory of the Church of the Most Precious Blood*



# Loyola Jesuit Center | Morristown, NJ



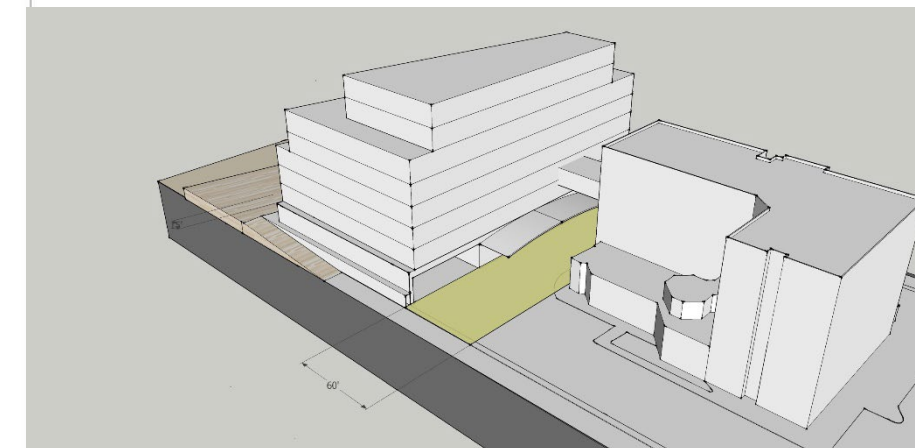
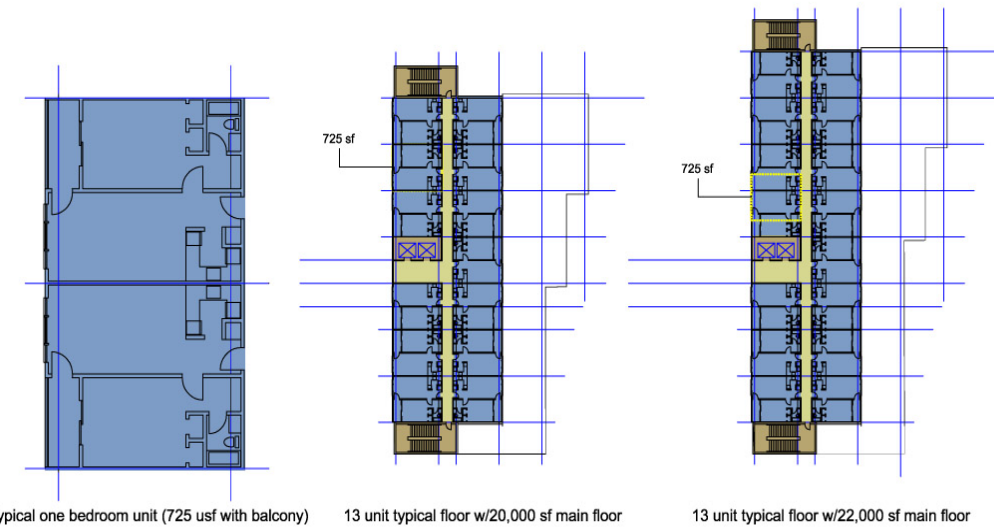
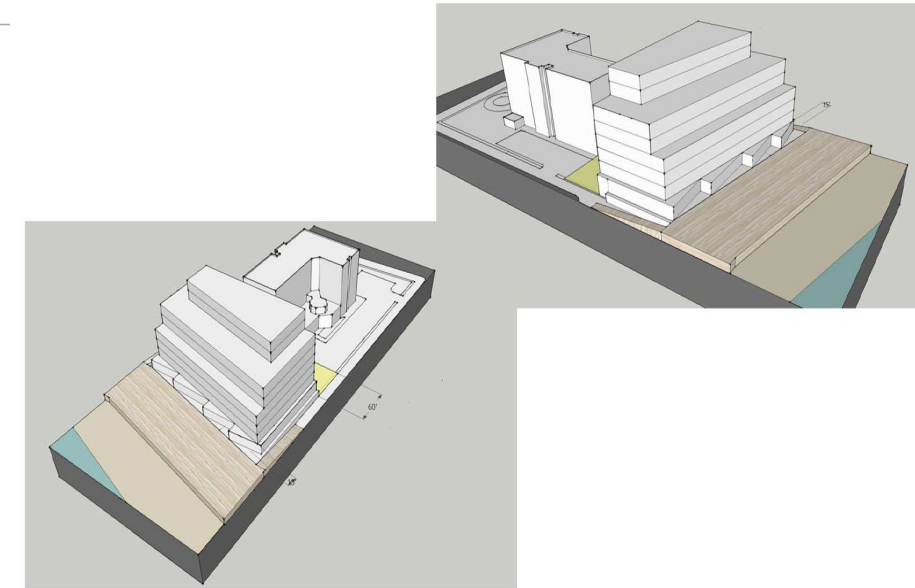
Willing Heart, Metropolitan Baptist Church | Newark , NJ



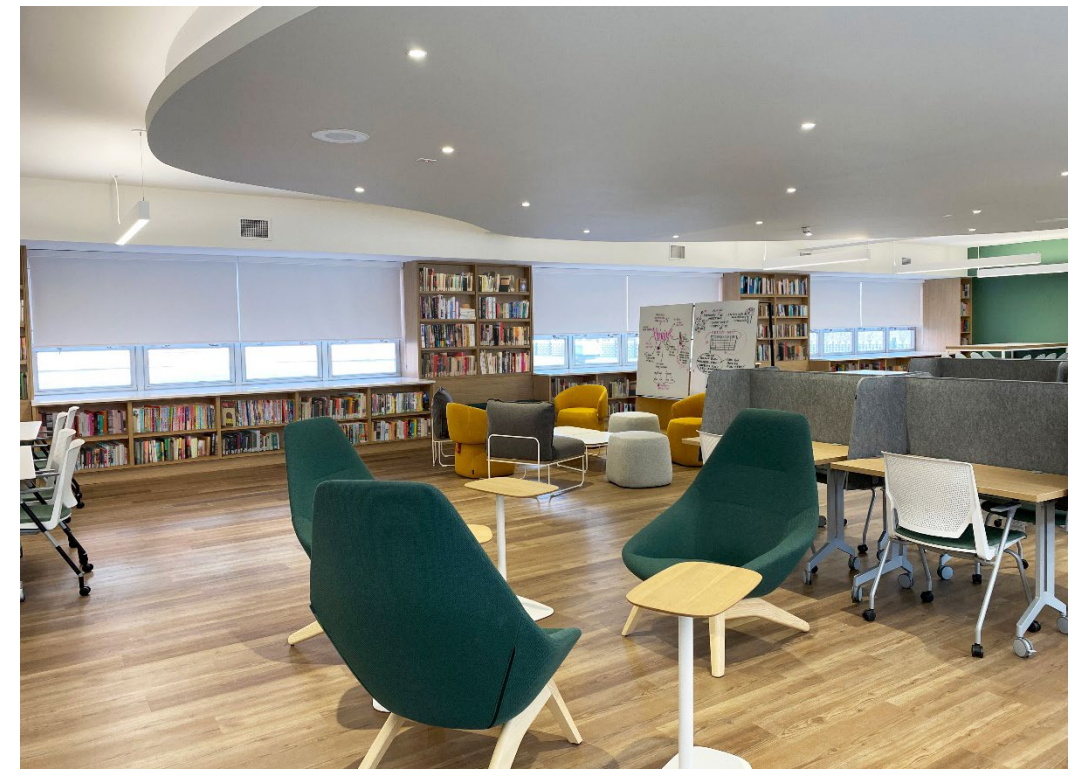




existing site layout



MedDev with Trammel Crowe Company  
Kimmerle Newman Architects



Teen Pride Center | Morristown, NJ

